



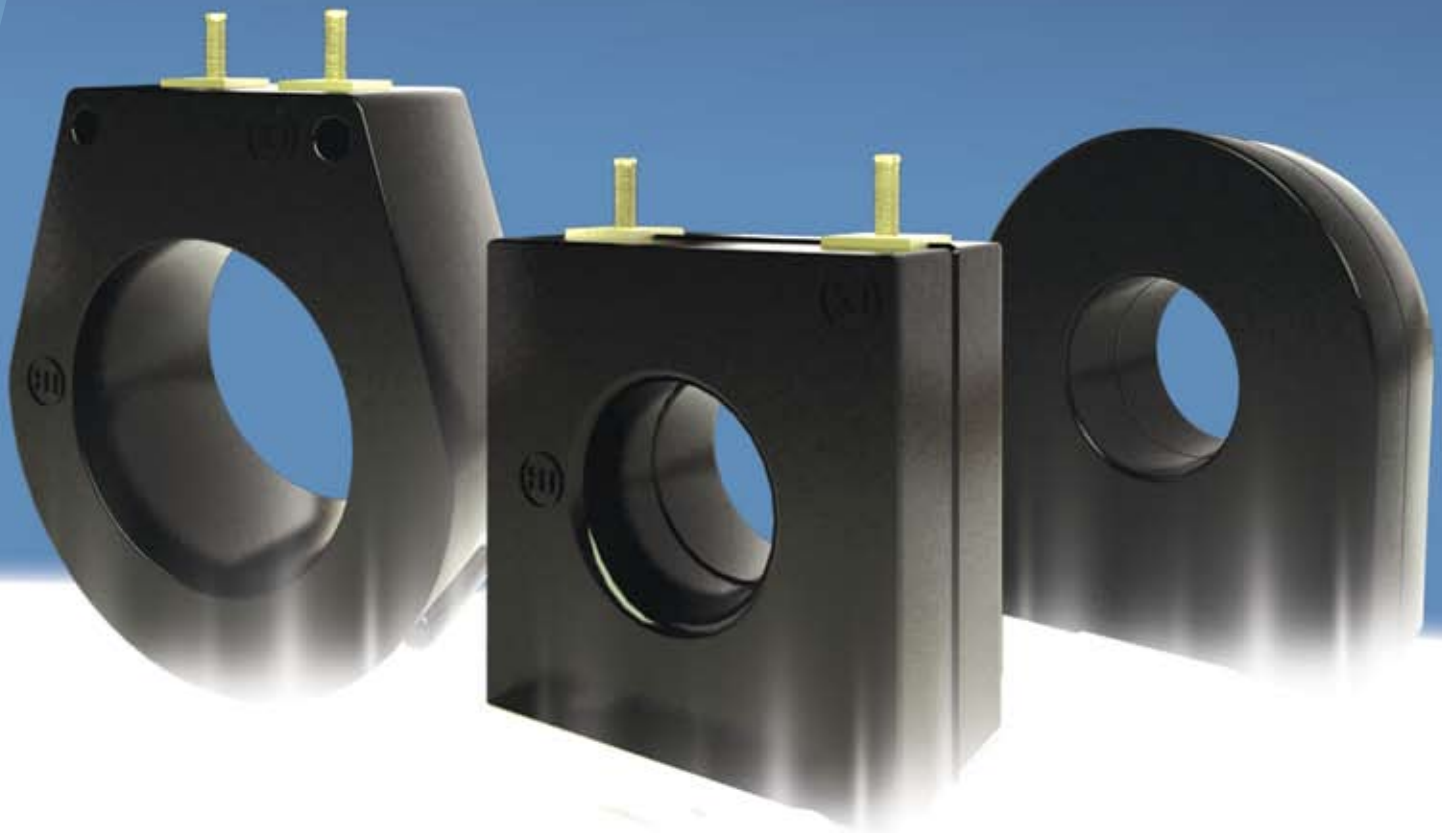
# MOTORTRONICS™

*Solid State AC Motor Control*



## *Current* **TRANSFORMERS**

**600V Non-Ansi Rated Window Type**



### **Features:**

- Voltage: 600V Non-Ansi Rated Window Type
- Application: Ammeters, wattmeters, and cross current compensation.
- Frequency: 50 - 400 Hz
- Insulation Level: 600 Volts, 10 kV BIL full wave

**TRANSFORMERS**

600V Current Transformers Non-ANSI Rated Window Type

Frequency: 50 - 400 Hz

Insulation Level: 600 Volts, 10 kV BIL full wave

<b>MODEL 13 (PCB)</b>	Window Sizes 0.56"	 13	Current Ratio Range: 1000:1
<b>MODEL 14, 15, 16</b>	Window Sizes 0.56" 0.94" 1.25"	 14,15,16 SFT	Current Ratio Range: 200:5 ~ 2000:5
<b>MODEL 1A &amp; 1B</b>	Window Sizes 0.64"	 1A 1B	Current Ratio Range: 50:5 ~ 250:5
<b>MODEL 2</b>	Window Sizes 1.00" 1.05" 1.13"	 2SFT  2SHT  2RL 2DL	Current Ratio Range: 50:5 ~ 400:5
<b>MODEL 5</b>	Window Sizes 1.56"	 5SFT  5SHT  5RL	Current Ratio Range: 50:5 ~ 1200:5
<b>MODEL 5 DRL</b>	Window Sizes 1.56"	 5DRL	Current Ratio Range: 50:5 ~ 1200:5
<b>MODEL 56</b>	Window Sizes 2.06"	 56 SFT  56 RL	Current Ratio Range: 50:5 ~ 1200:5
<b>MODEL 6</b>	Window Sizes 2.06"	 6 SFT  6 SHT  6 RL	Current Ratio Range: 100:5 ~ 1500:5
<b>MODEL 63A,63B,63C</b>	Window Sizes 0.56" 1.25" 2.00"	 63A RT  63B RT  63C RT	Current Ratio Range: 50:5 ~ 600:5
<b>MODEL 7</b>	Window Sizes 2.05"	 7 SFT  7 SHT  7 RL	Current Ratio Range: 100:5 ~ 1600:5
<b>MODEL 76</b>	Window Sizes 3.00"	 76 SFT  76 RL	Current Ratio Range: 200:5 ~ 2000:5