

# CURRENT TRANSFORMER

Model 135MR

Window Diameter 5.75"

**Application:**  
Relaying

**Frequency:**  
50 - 400 Hz

**Insulation Level:**  
600 Volts, 10 kv BIL full wave

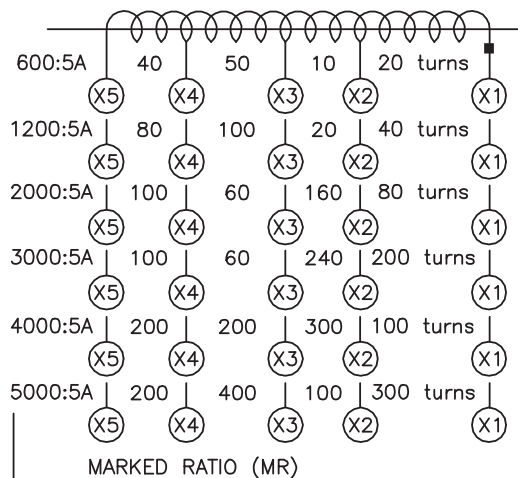
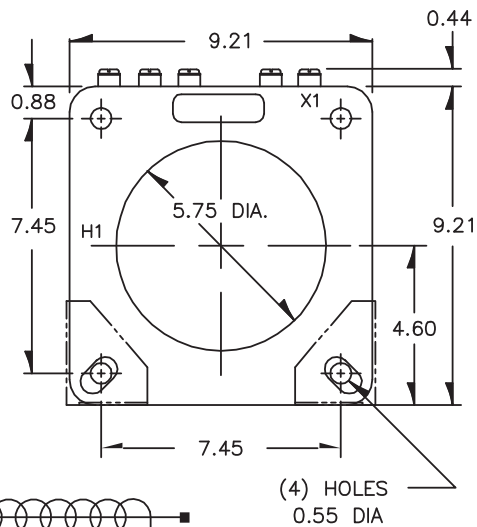
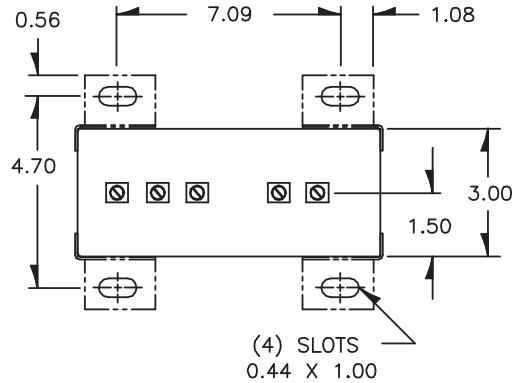
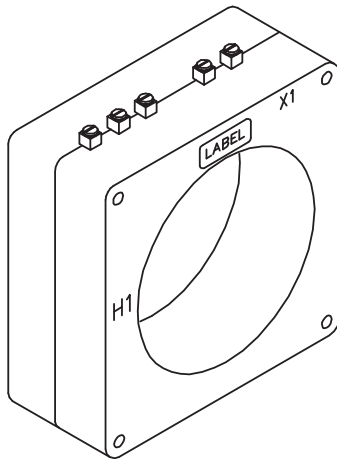


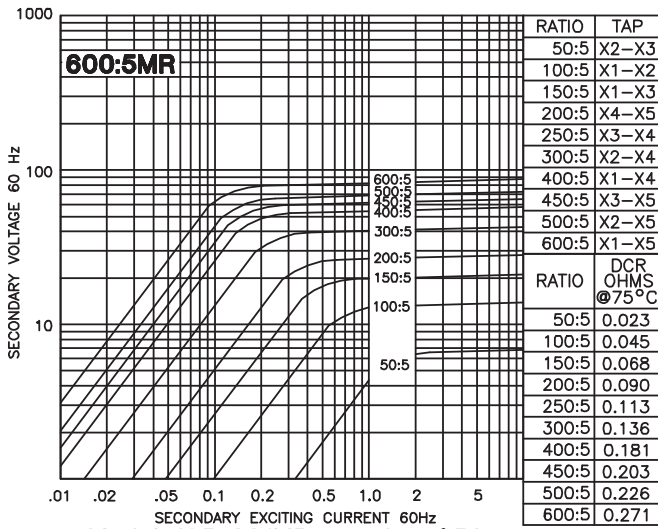
E228202

**Continuous Thermal Current Rating Factor:**

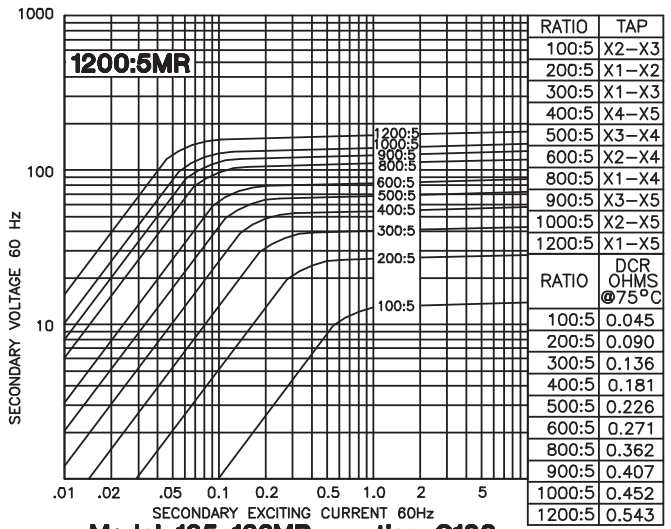
See TRF at curve.

- Terminals are brass screws No. 10 - 32 with one flatwasher, lockwasher and regular nut.
- The transformer winding is arranged so that the the turns are fully distributed between all taps.
- Order mounting bracket kit No. CR-CL separately.
- Approximate weight: 18 lbs

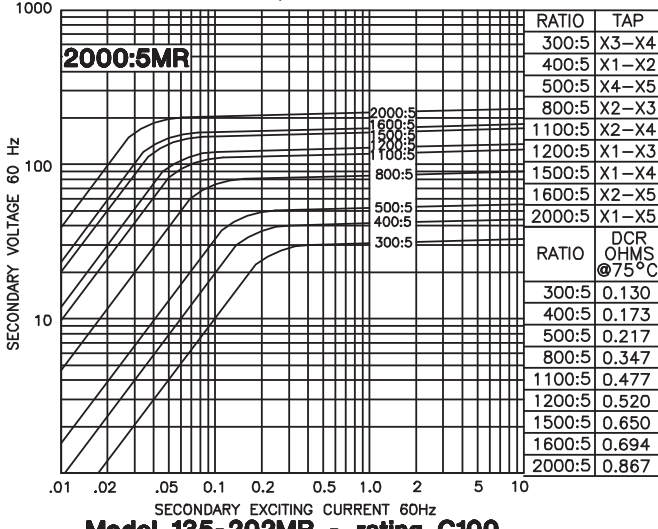




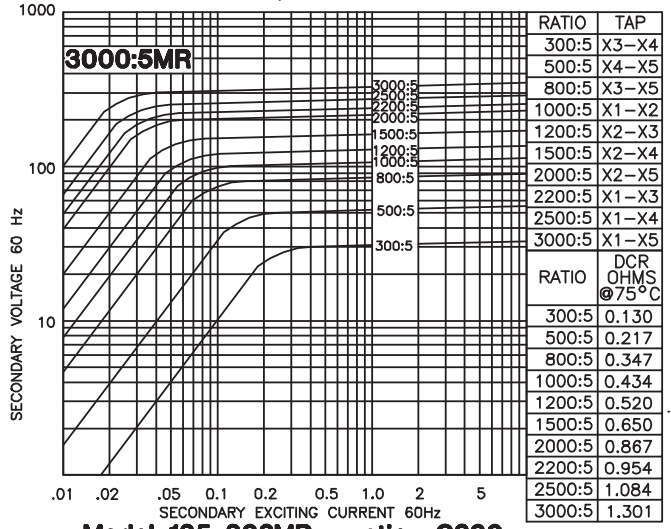
**Model 135-601MR - rating C50**  
TRF= 2.0 @ 30°C, 2.0 @ 55°C amb.



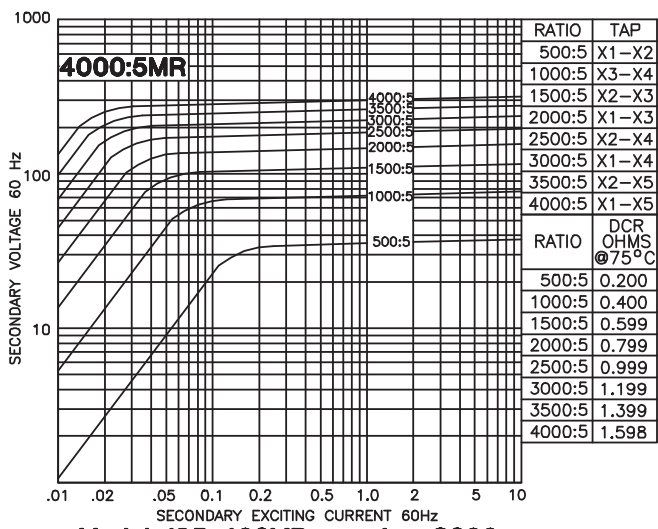
**Model 135-122MR - rating C100**  
TRF= 1.5 @ 30°C, 1.33 @ 55°C amb.



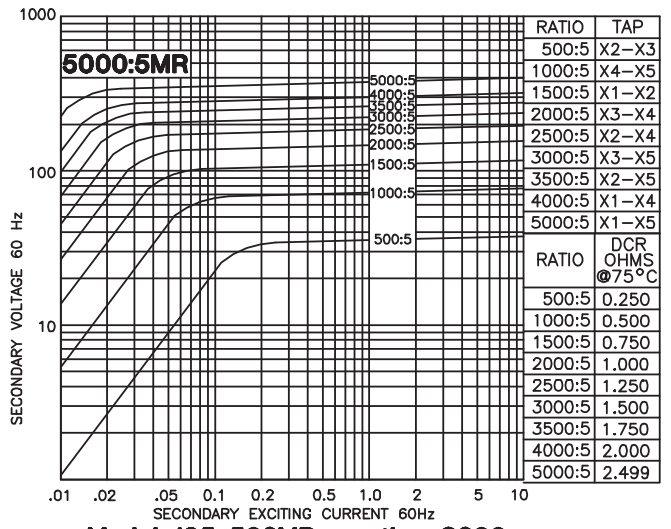
**Model 135-202MR - rating C100**  
TRF= 1.0 @ 30°C, 0.8 @ 55°C amb.



**Model 135-302MR - rating C200**  
TRF= 1.0 @ 30°C, 0.8 @ 55°C amb.



**Model 135-402MR - rating C200**  
TRF= 1.0 @ 30°C, 0.6 @ 55°C amb.



**Model 135-502MR - rating C200**  
TRF= 1.0 @ 30°C, 0.6 @ 55°C amb.