

CURRENT TRANSFORMER

Model 137MR

Window Diameter 5.50"

Application:
Relaying

Frequency:
50 - 400 Hz

Insulation Level:
600 Volts, 10 kv BIL full wave

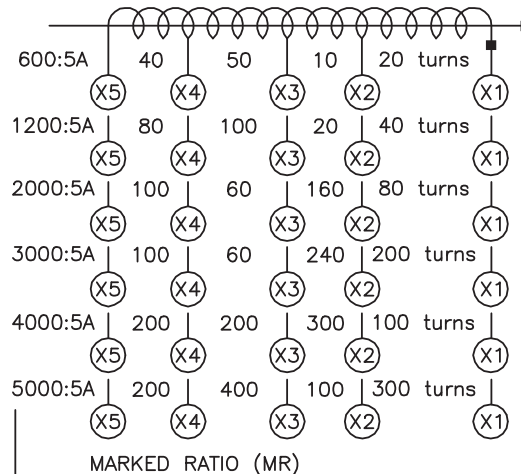
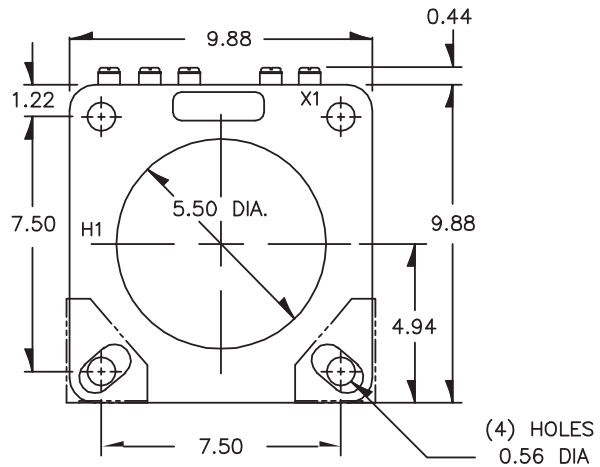
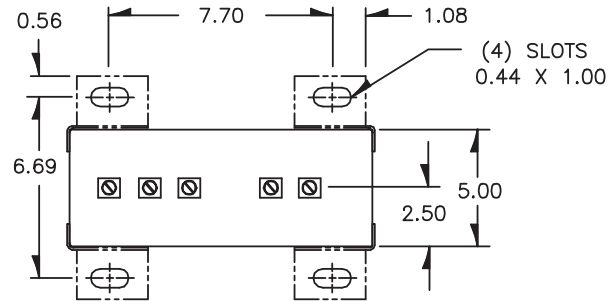
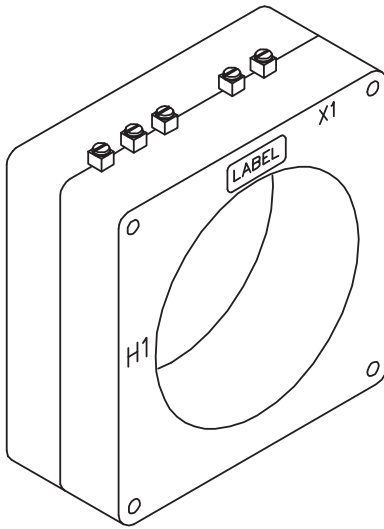


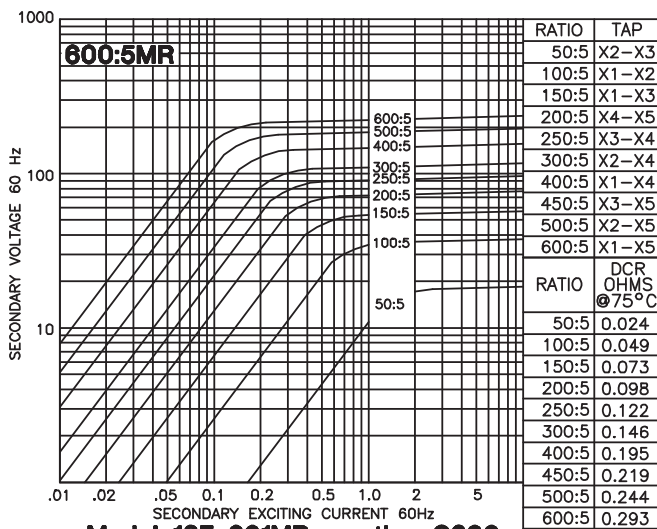
E228202

Continuous Thermal Current Rating Factor:

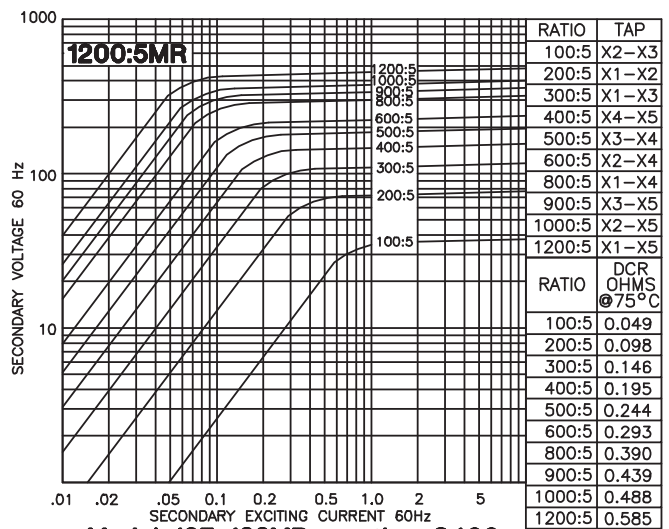
See TRF at curve.

- Terminals are brass screws No. 10 - 32
 - with one flat washer, lockwasher and regular nut.
- □ The transformer winding is arranged so that the
 - turns are fully distributed between all taps.
- Order mounting bracket kit CR-CL separately.
- □ Approximate weight: 50 lbs.

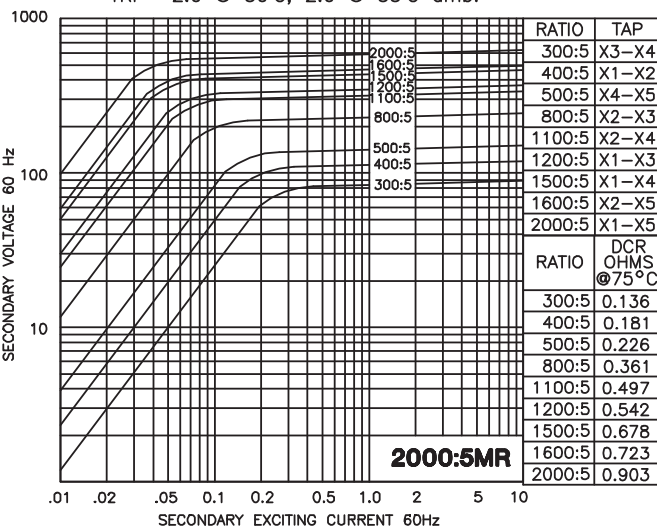




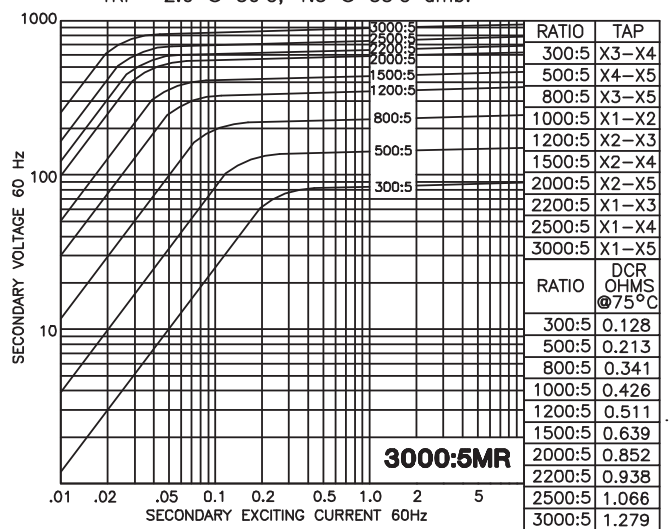
Model 137-601MR - rating C200
TRF= 2.0 @ 30°C, 2.0 @ 55°C amb.



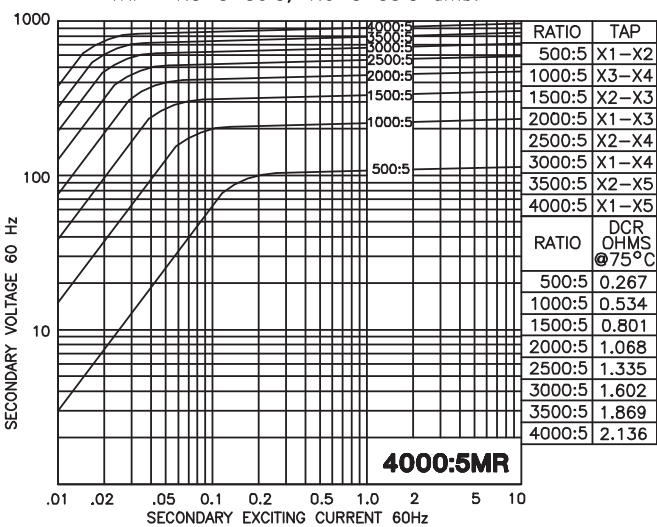
Model 137-122MR - rating C400
TRF= 2.0 @ 30°C, 1.5 @ 55°C amb.



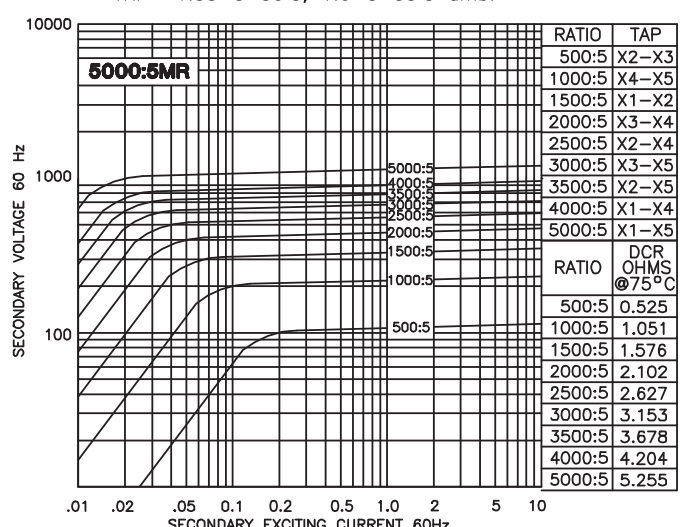
Model 137-202MR - rating C400
TRF= 1.5 @ 30°C, 1.0 @ 55°C amb.



Model 137-302MR - rating C400
TRF= 1.33 @ 30°C, 1.0 @ 55°C amb.



Model 137-402MR - rating C400
TRF= 1.0 @ 30°C, 0.8 @ 55°C amb.



Model 137-502MR - rating C400
TRF= 0.6 @ 30°C, 0.3 @ 55°C amb.