

CURRENT TRANSFORMER

Model 142MR

Window Diameter 7.25"

Application:
Relaying

Frequency:
50 - 400 Hz

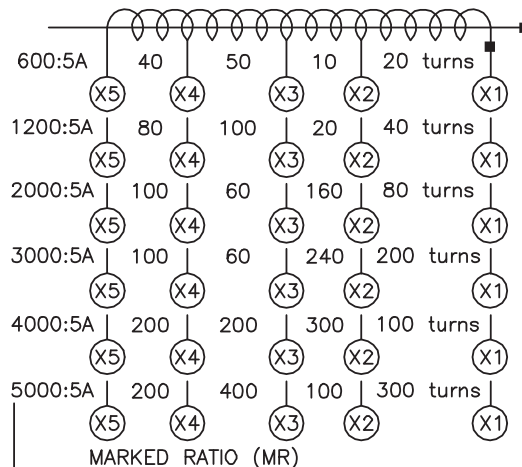
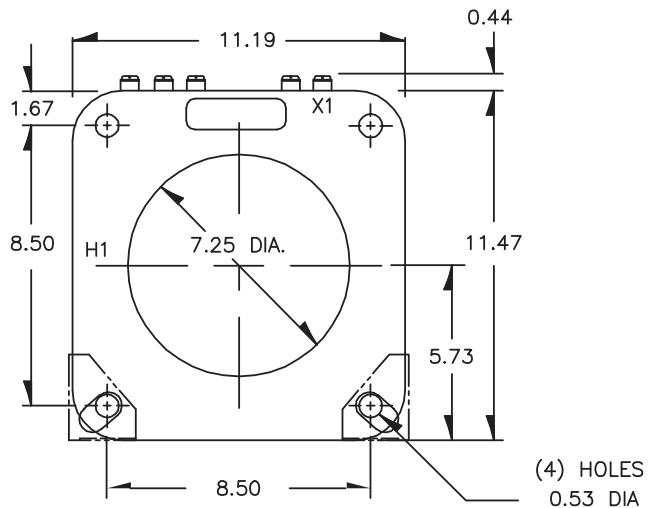
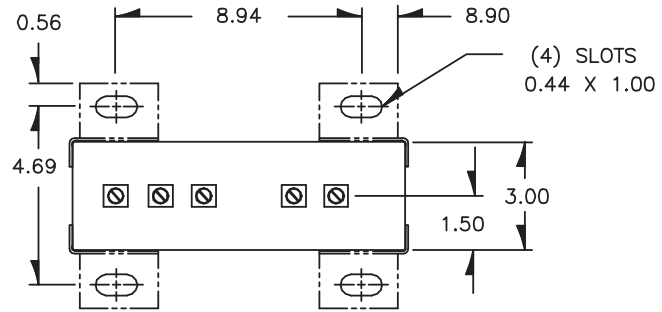
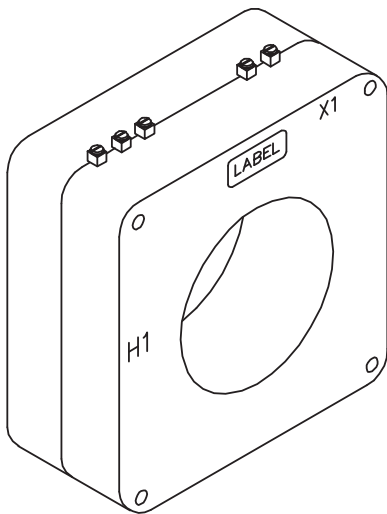
Insulation Level:
600 Volts, 10 kv BIL full wave

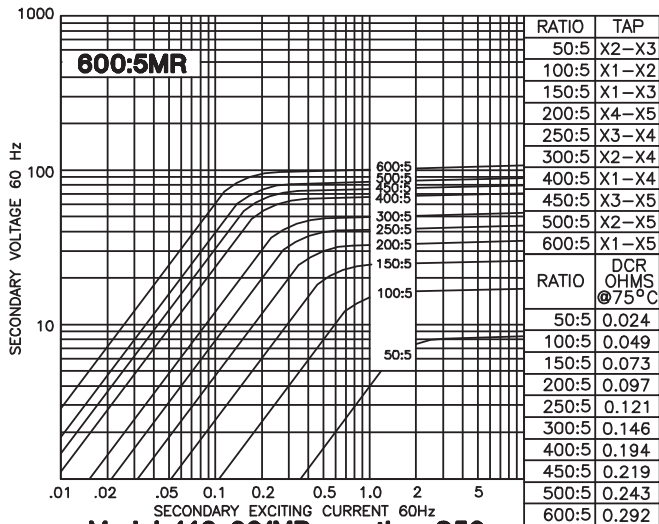


E228202

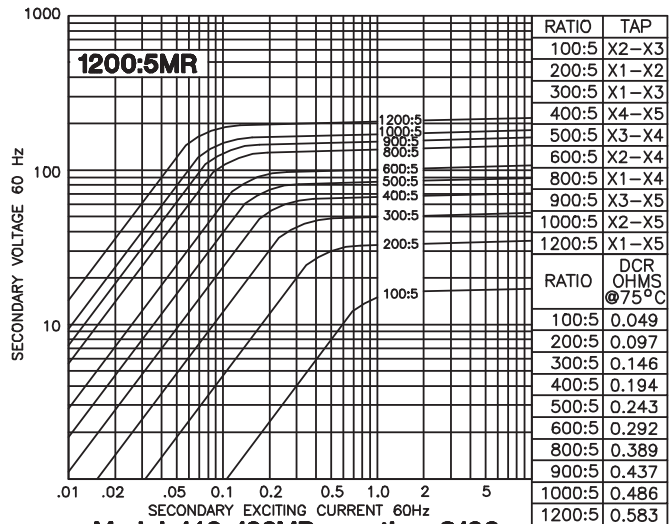
Continuous Thermal Current Rating Factor:
See TRF at curve.

- Terminals are brass screws No. 10 - 32 with one flatwasher, lockwasher and regular nut.
- The transformer winding is arranged so that the the turns are fully distributed between all taps.
- Order mounting bracket kit No. CR-CL separately.
- Approximate weight: 31 lbs

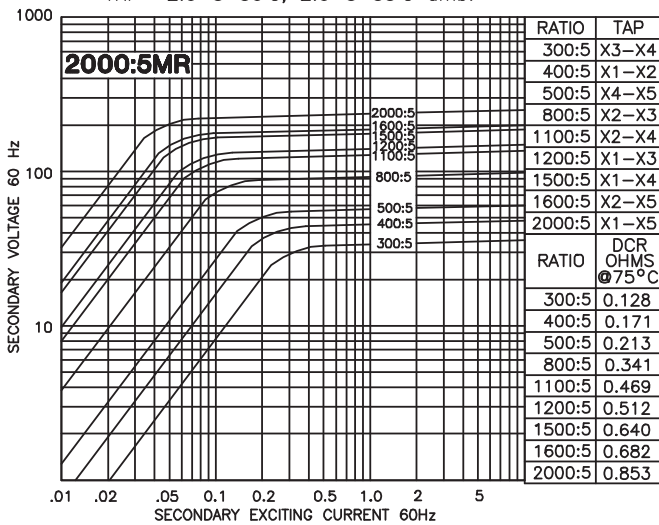




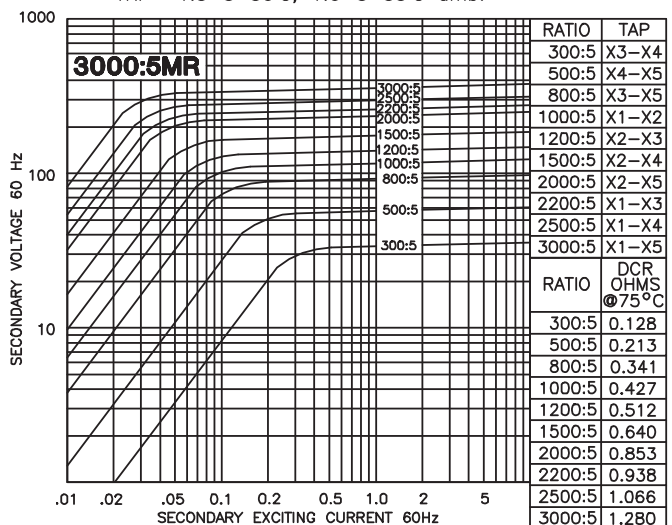
Model 142-601MR - rating C50
TRF= 2.0 @ 30°C, 2.0 @ 55°C amb.



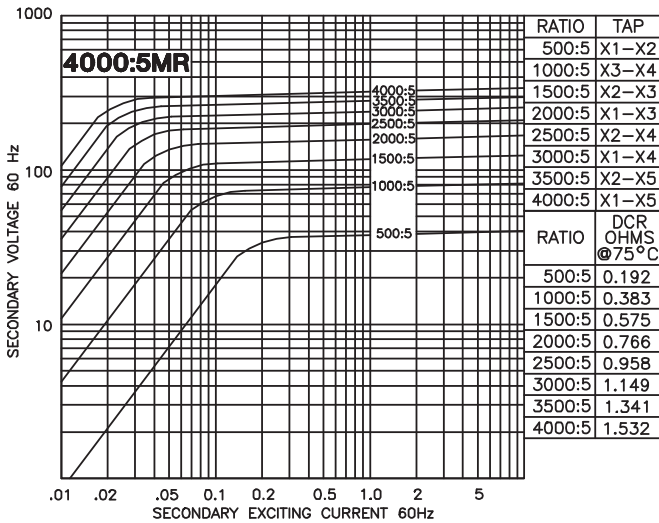
Model 142-122MR - rating C100
TRF= 1.5 @ 30°C, 1.0 @ 55°C amb.



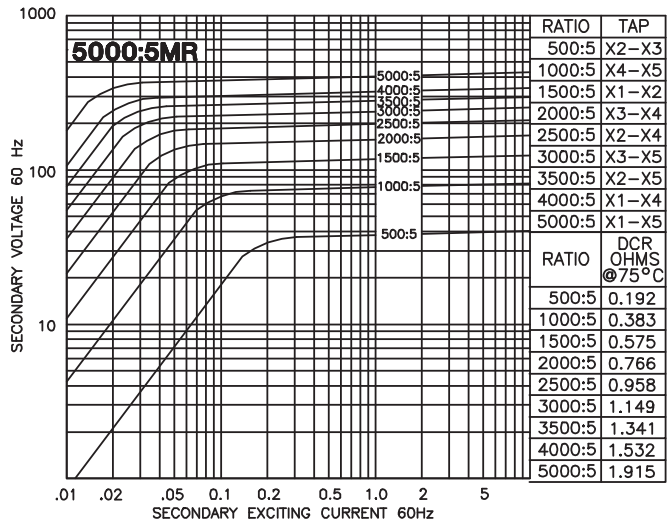
Model 142-202MR - rating C200
TRF= 2.0 @ 30°C, 1.5 @ 55°C amb.



Model 142-302MR - rating C200
TRF= 1.0 @ 30°C, 0.8 @ 55°C amb.



Model 142-402MR - rating C200
TRF= 1.0 @ 30°C, 0.8 @ 55°C amb.



Model 142-502MR - rating C200
TRF= 1.0 @ 30°C, 0.8 @ 55°C amb.