

Wound Primary Indoor Current Transformer

**Model CTW3-60-T50
CTWH3-60-T50** rev 071818

CERTIFICATIONS:

APPLICATION:

Relaying and metering

FREQUENCY:

50-400 Hz.

MAXIMUM SYSTEM VOLTAGE:

5.6Kv, BIL 60kV

APPROXIMATE WEIGHT:

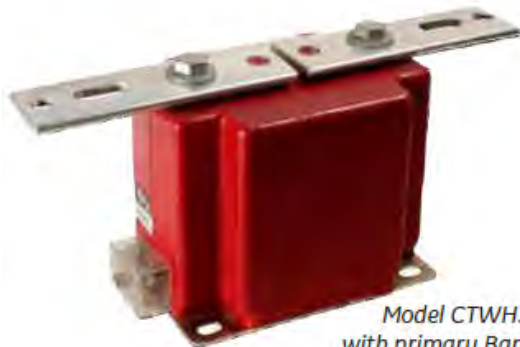
20 lbs.

CONTINUOUS THERMAL RATING FACTOR:

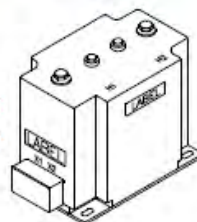
1.5 at 30°C., 1.33 at 55°C.

150:5 and 600:5- 1.33 at 30°C., 1.00 at 55°C.

250:5- 1.00 at 30°C., 0.85 at 55°C.



Model CTWH3
with primary Bars



Model CTW3
without primary Bars



Primary terminals are ½ - 13 bolts with one Belleville washer.

Secondary terminals are brass studs No. 10-32 with one flatwasher, lockwasher and regular nut.

Supplied with short circuit secondary terminal cover. Vacuum cast polyurethane resin. Other ratios, secondary currents and dual ratios are available. Refer to factory.

MODEL CTW3-60-T50 & CTWH3-60-T50

Approximate weight: 20 lbs.

CAUTION: Use only the Belleville washers supplied. Tighten to between 25 to 30 foot-pounds. DO NOT OVERTIGHTEN

| Catalog Number | Current Ratio | Relay Class | ANSI Metering Class at 60 Hz | | | | | **Thermal current Rating 1 Second RMS Amps |
|-----------------|---------------|-------------|------------------------------|------|------|------|------|---|
| | | | BO.1 | BO.2 | BO.5 | BO.9 | B1.8 | |
| CTW3-60-T50-050 | 5:5 | T50 | 0.3 | 0.3 | 0.3 | 0.6 | 1.2 | 375 |
| CTW3-60-T50-100 | 10:5 | T50 | 0.3 | 0.3 | 0.3 | 0.6 | 1.2 | 1,000 |
| CTW3-60-T50-150 | 15:5 | T50 | 0.3 | 0.3 | 0.3 | 0.6 | 1.2 | 1,690 |
| CTW3-60-T50-200 | 20:5 | T50 | 0.3 | 0.3 | 0.3 | 0.6 | 1.2 | 1,900 |
| CTW3-60-T50-250 | 25:5 | T50 | 0.3 | 0.3 | 0.3 | 0.6 | 1.2 | 2,700 |
| CTW3-60-T50-300 | 30:5 | T50 | 0.3 | 0.3 | 0.3 | 0.6 | 1.2 | 2,700 |
| CTW3-60-T50-400 | 40:5 | T50 | 0.3 | 0.3 | 0.3 | 0.6 | 1.2 | 4,720 |
| CTW3-60-T50-500 | 50:5 | T50 | 0.3 | 0.3 | 0.3 | 0.6 | 1.2 | 4,720 |
| CTW3-60-T50-750 | 75:5 | T50 | 0.3 | 0.3 | 0.3 | 0.6 | 1.2 | 8,630 |
| CTW3-60-T50-101 | 100:5 | T50 | 0.3 | 0.3 | 0.3 | 0.6 | 1.2 | 8,630 |
| CTW3-60-T50-151 | 150:5 | T50 | 0.3 | 0.3 | 0.3 | 0.6 | 1.2 | 14,380 |
| CTW3-60-T50-201 | 200:5 | T50 | 0.3 | 0.3 | 0.3 | 0.6 | 1.2 | 17,250 |
| CTW3-60-T50-251 | 250:5 | T50 | 0.3 | 0.3 | 0.3 | 0.6 | 1.2 | 17,250 |
| CTW3-60-T50-301 | 300:5 | T50 | 0.3 | 0.3 | 0.3 | 0.6 | 1.2 | 37,800 |
| CTW3-60-T50-401 | 400:5 | T50 | 0.3 | 0.3 | 0.3 | 0.6 | 1.2 | 37,800 |
| CTW3-60-T50-501 | 500:5 | T50 | 0.3 | 0.3 | 0.3 | 0.6 | 1.2 | 37,800 |
| CTW3-60-T50-601 | 600:5 | T50 | 0.3 | 0.3 | 0.3 | 0.6 | 1.2 | 37,800 |

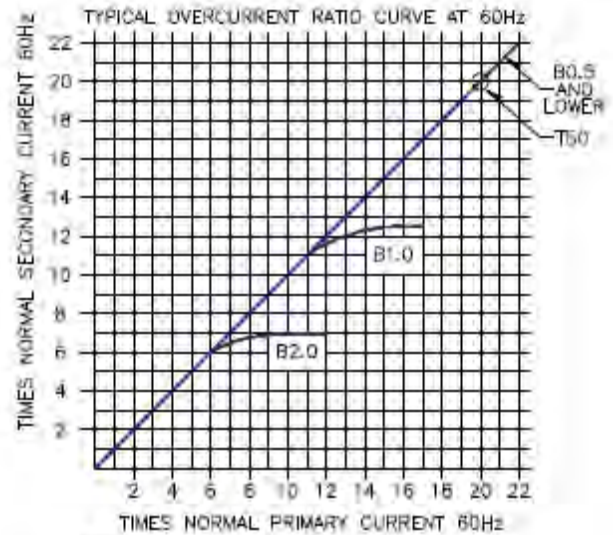
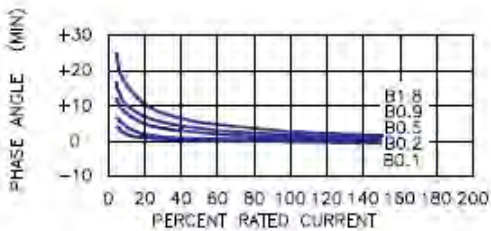
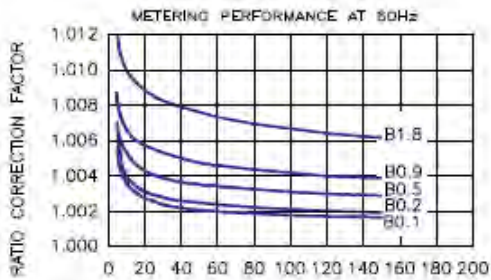
*For ordering with primary bars, change model number to CTWH3.

**With a burden of B0.1 or greater connected to the secondary.

Products are manufactured in a plant whose quality management system has been certified to be in compliance with ISO 9001:2015 by NQA

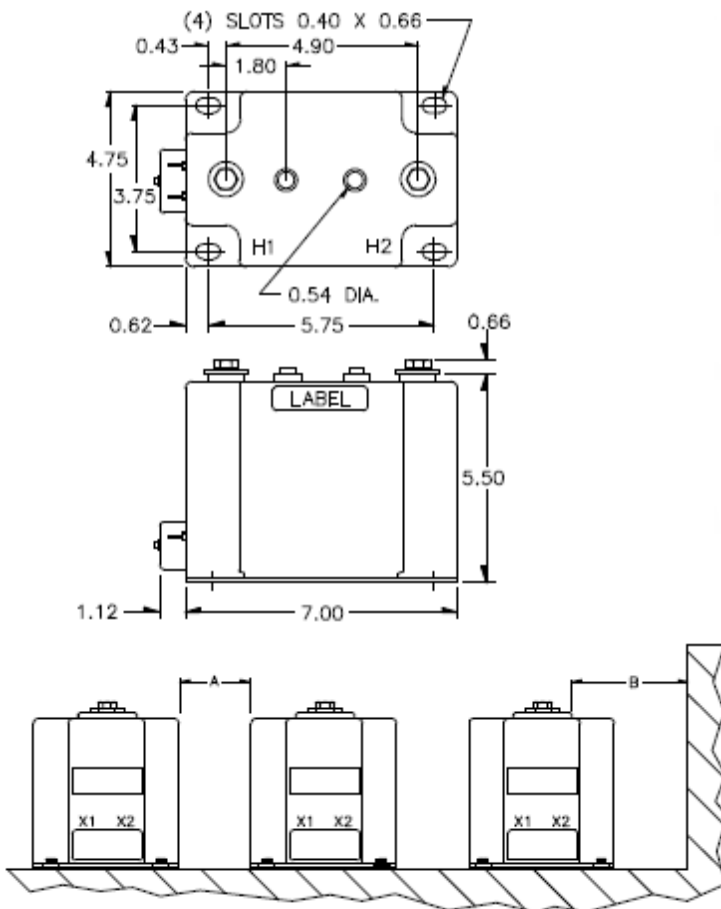
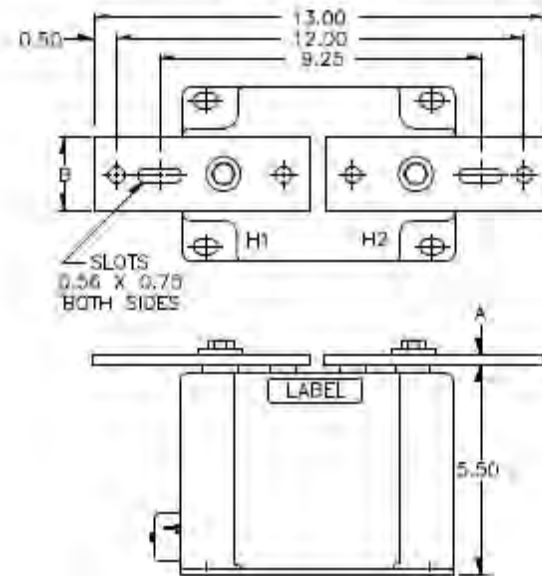
Wound Primary Indoor Current Transformer

**Model CTW3-60-T50
CTWH3-60-T50**



| PRIMARY CURRENT | BAR SIZES | |
|-----------------|------------|---|
| | DIMENSIONS | |
| 5 TO 150A | A | B |
| 200 TO 600A | A | B |

WITH PRIMARY BARS



RECOMMENDED MINIMUM SPACINGS

A = Unit to Unit = 0.75" minimum.

B = HV to Ground in Air = 3.00" minimum.

Recommended spacing are for guidance only. User needs to set appropriate values to assure performance for high potential test, impulse test, high humidity, partial discharge, high altitude, and other considerations like configuration.