



**Current Transformer
Technologies LTD**



Current Transformer

Model 117MR

rev 08192025

CERTIFICATIONS:



E228202

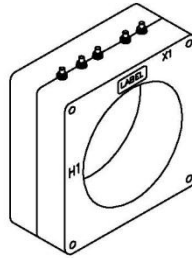


223647



ISO 9001

QUALITY
MANAGEMENT



Model	117MR
Window Size	4.62
Width	7.00
Height	7.12
Depth	4.00

APPLICATION:

Relaying

FREQUENCY:

50-400 Hz.

INSULATION LEVEL:

600 Volts. 10 kV BIL. full wave

WINDOW DIAMETER:

4.62"

APPROXIMATE WEIGHT:

13 lbs.

CONNECTIONS:

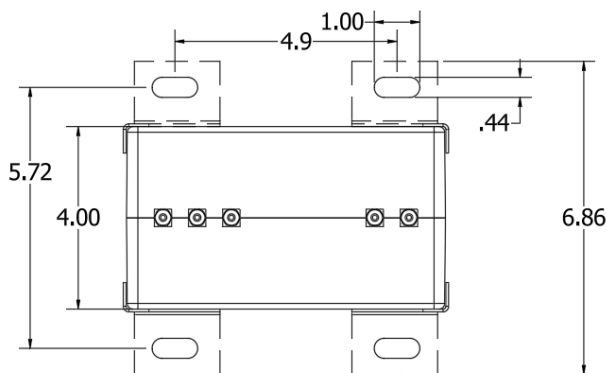
- Terminals are brass studs No. 8-32 UNC with one flat washer, lockwasher, and regular nut
- The transformer winding is arranged so that the turns are fully distributed between all taps
- Mounting kit # 117-KIT (optional)

MODEL 117MR

Window Diameter 4.62"

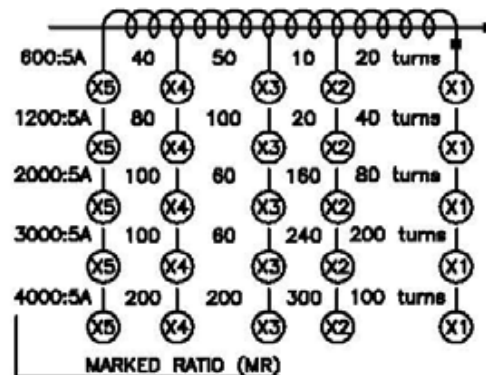
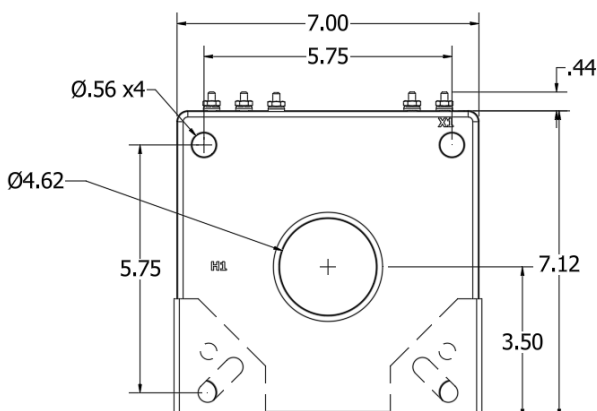
Approximate weight: 13 lbs.

Catalog Number	Relay Class	Continuous Thermal	
		@ 30°C	@ 50°C
117-601MR	C20	2.0	1.5
117-122MR	C100	1.33	1.0
117-202MR	C50	1.0	0.6



OPTIONAL BRACKETS

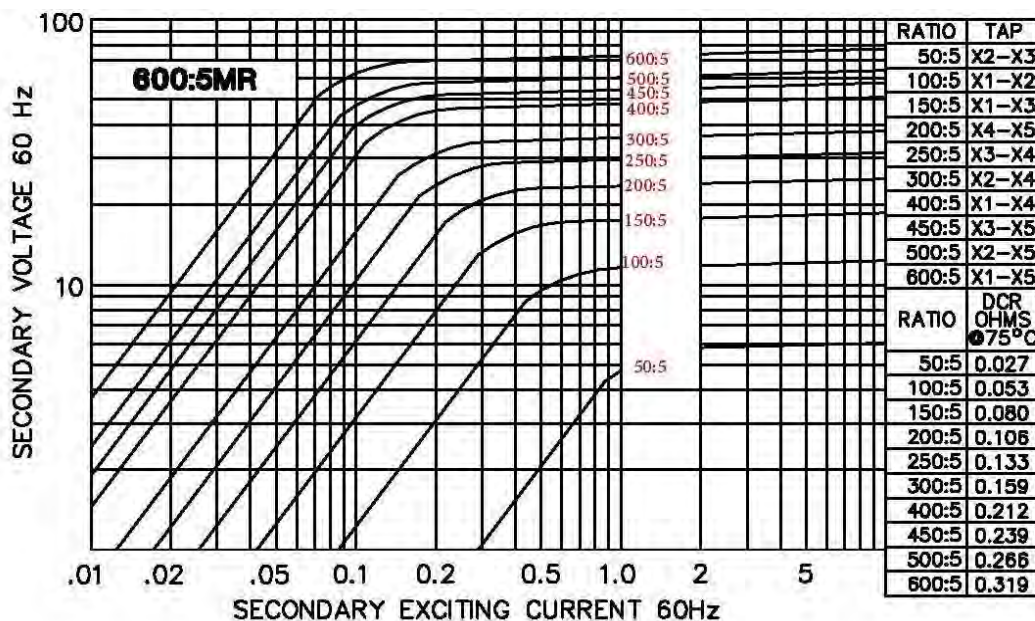
KIT # 117-KIT



Products are manufactured in a plant whose quality management system has been certified to be in compliance with ISO 9001:2015 by NQA

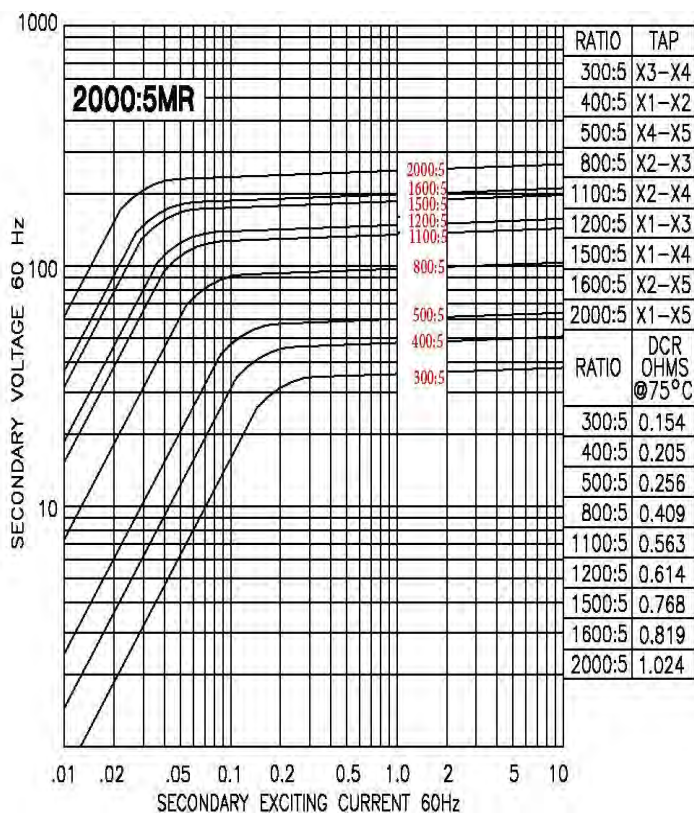


EXCITATION CURVE



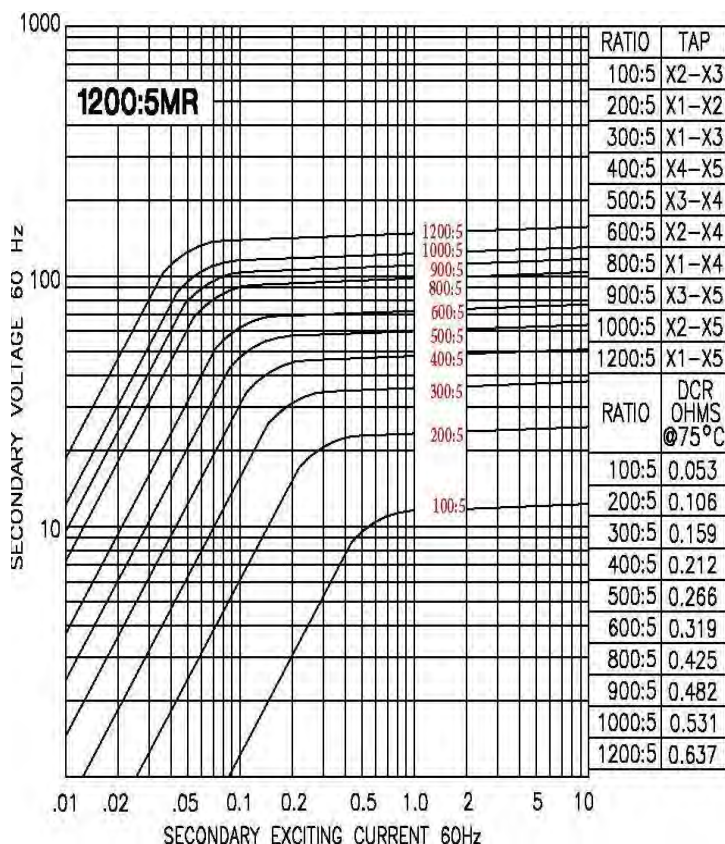
Model 117-601MR - rating C20

TRF= 2.0 @ 30°C, 1.5 @ 55°C amb.



Model 117-202MR - rating C50

TRF= 1.00 @ 30°C, 0.6 @ 55°C amb.



Model 117-122MR - rating C100

TRF= 1.33 @ 30°C, 1.0 @ 55°C amb.