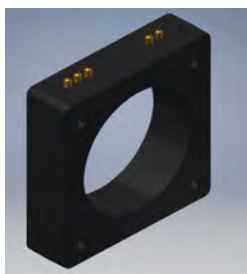




**Current Transformer
Technologies LTD**



Current Transformer



Model	140MR
Window Size	8.13
Width	11.10
Height	11.47
Depth	3.00

APPLICATION:

Relaying and metering

FREQUENCY:

50-400 Hz.

INSULATION LEVEL:

600 Volts. 10 kV BIL. full wave

WINDOW DIAMETER:

8.13"

APPROXIMATE WEIGHT:

22 lbs.

CONNECTIONS:

- Terminals are brass screws No. 10-32 UNF with one flat washer and a split lock washer
- Mounting Kit # 140-KIT (optional)

Model 140MR

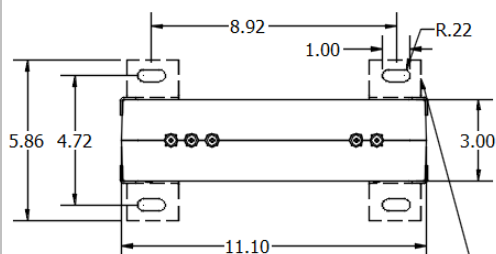
rev 09082025

CERTIFICATIONS:

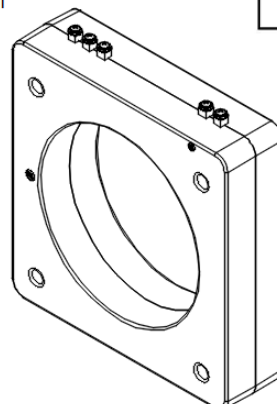
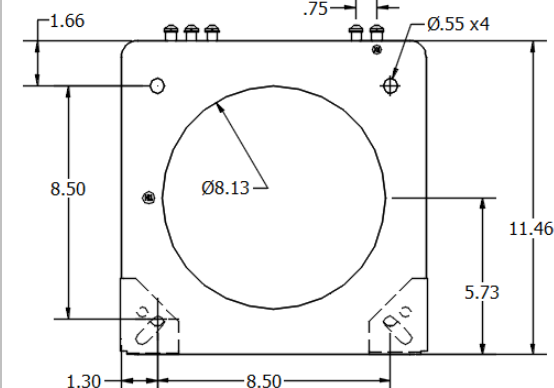


MODEL 140MR Window Diameter 8.13" Approximate weight: 22 lbs.

Catalog Number	Relay Class	Continuous Thermal	
		@ 30°C	@ 50°C
140-601MR	C50	2.0	2.0
140-122MR	C100	1.5	1.5
140-202MR	C100	1.33	1.0
140-302MR	C100	1.0	0.8
140-402MR	C100	1.0	0.8
140-502MR	C50	1.0	0.8



OPTIONAL MOUNTING
KIT # 140-KIT



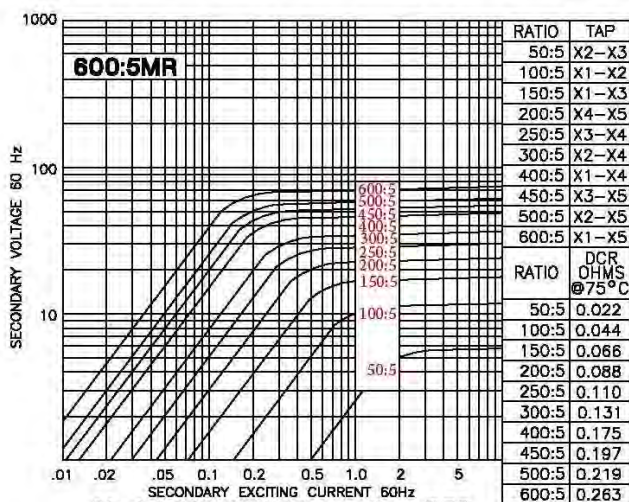
600:5A	40	50	10	20 turns	X1
1200:5A	80	100	20	40 turns	X1
2000:5A	100	60	160	80 turns	X1
3000:5A	100	60	240	200 turns	X1
4000:5A	200	200	300	100 turns	X1
5000:5A	200	400	100	300 turns	X1

MARKED RATIO (MR)

Products are manufactured in a plant whose quality management system has been certified to be in compliance with ISO 9001:2015 by NQA

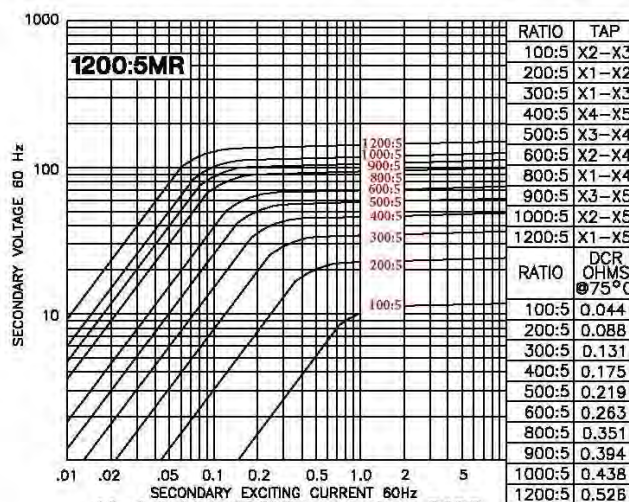


EXCITATION CURVE



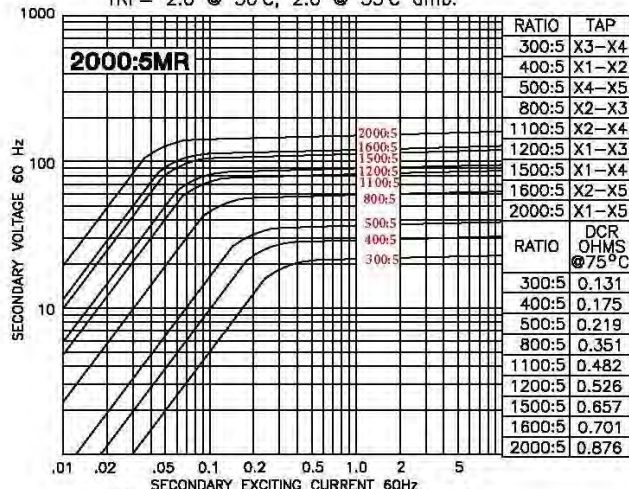
Model 140-601MR - rating C50

TRF= 2.0 @ 30°C, 2.0 @ 55°C amb.



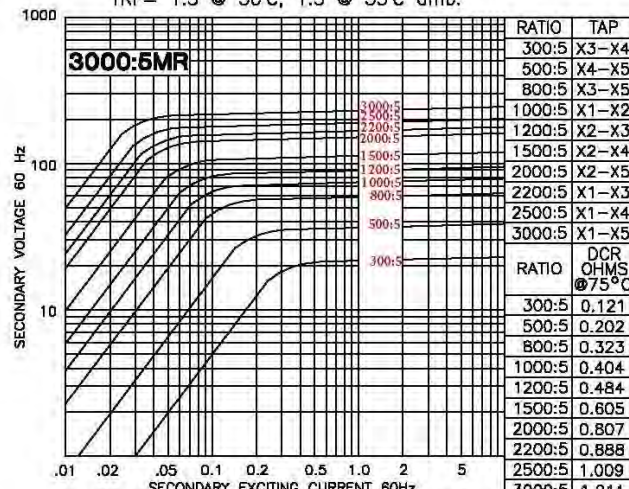
Model 140-122MR - rating C100

TRF= 1.5 @ 30°C, 1.5 @ 55°C amb.



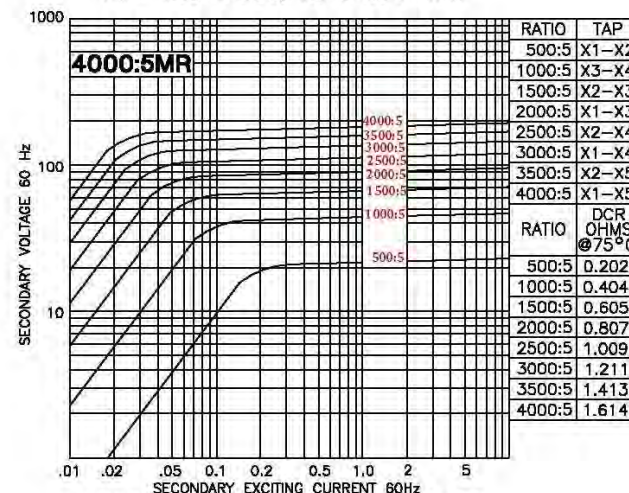
Model 140-202MR - rating C100

TRF= 1.33 @ 30°C, 1.0 @ 55°C amb.



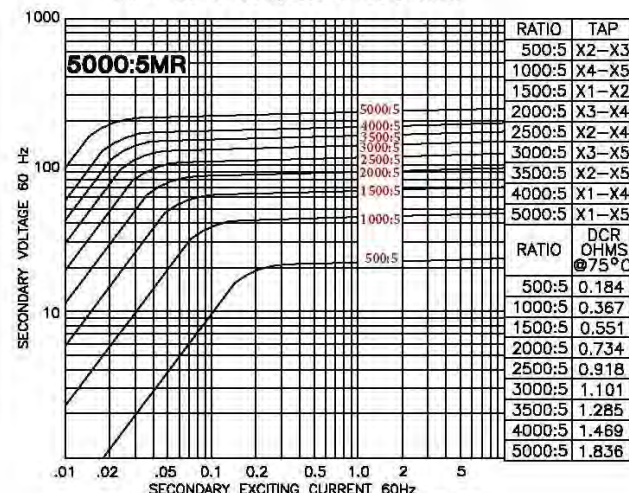
Model 140-302MR - rating C100

TRF= 1.0 @ 30°C, 0.8 @ 55°C amb.



Model 140-402MR - rating C200

TRF= 1.0 @ 30°C, 0.8 @ 55°C amb.



Model 140-502MR - rating C50

TRF= 1.0 @ 30°C, 0.8 @ 55°C amb.