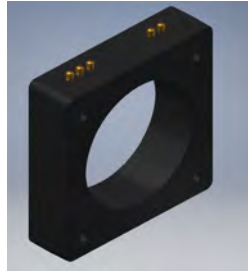




**Current Transformer
Technologies LTD**



Current Transformer



APPLICATION:

Relaying and metering

FREQUENCY:

50-400 Hz.

INSULATION LEVEL:

600 Volts. 10 kV BIL. full wave

WINDOW DIAMETER:

7.25"

APPROXIMATE WEIGHT:

31 lbs.

CONNECTIONS:

- Terminals are brass screws No. 10-32 UNF with one flat washer and a split lock washer
- Mounting Kit # 142-KIT (optional)

Model	142MR
Window Size	7.25
Width	11.10
Height	11.47
Depth	3.00

MODEL 142MR

Window Diameter 7.25"

Approximate weight: 31 lbs.

Model 142MR

rev 08282025

CERTIFICATIONS:



E228202



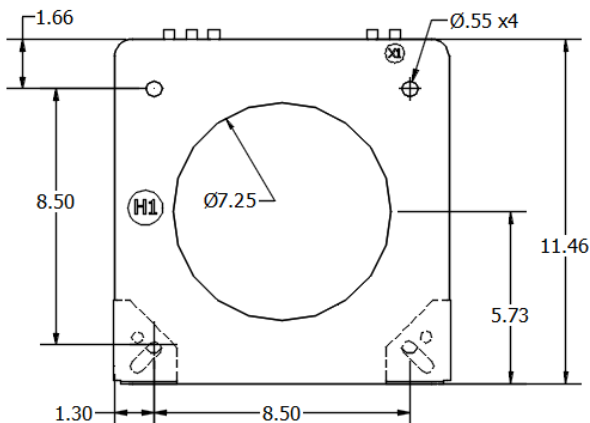
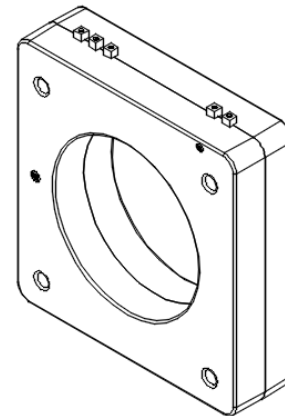
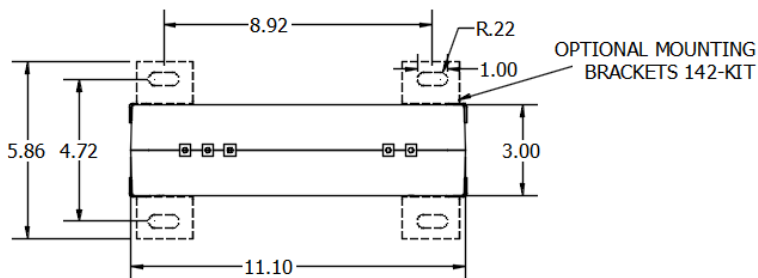
223647



ISO 9001

QUALITY
MANAGEMENT

Catalog Number	Relay Class	Continuous Thermal	
		@ 30°C	@ 50°C
142-601MR	C50	2.0	2.0
142-122MR	C200	1.5	1.0
142-202MR	C200	2.0	1.5
142-302MR	C200	1.0	0.8
142-402MR	C200	1.0	0.8
142-502MR	C200	1.0	0.8



600:5A	40	50	10	20 turns	X1
1200:5A	80	100	20	40 turns	X1
2000:5A	100	60	160	80 turns	X1
3000:5A	100	60	240	200 turns	X1
4000:5A	200	200	300	100 turns	X1
5000:5A	200	400	100	300 turns	X1

MARKED RATIO (MR)

Products are manufactured in a plant whose quality management system has been certified to be in compliance with ISO 9001:2015 by NQA



Current Transformer
Technologies LTD

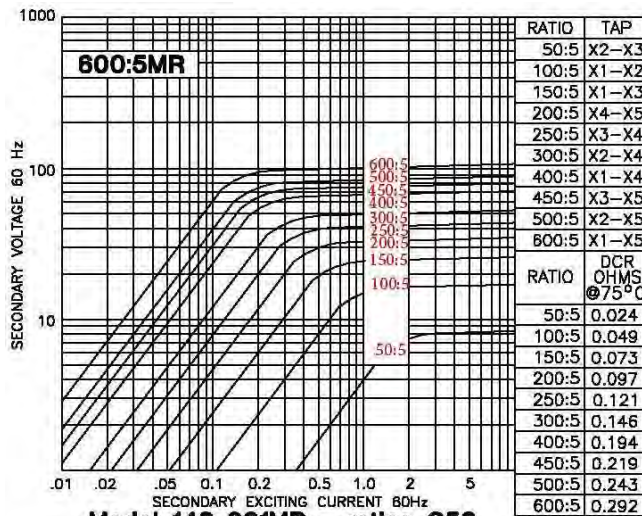


Current Transformer

Model 142MR

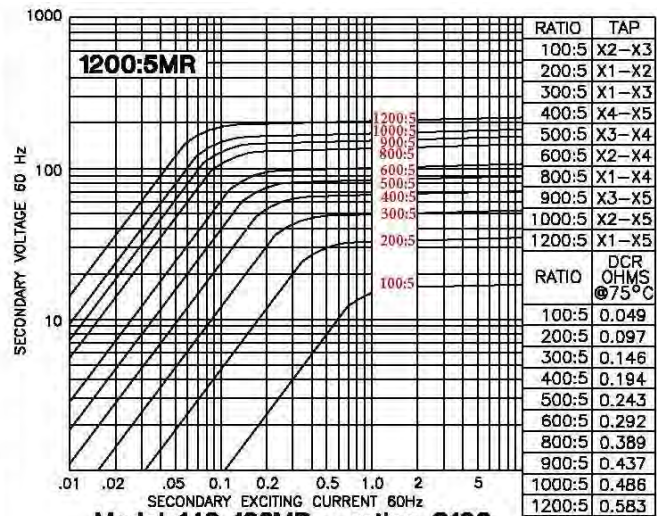
rev 08282025

EXCITATION CURVE



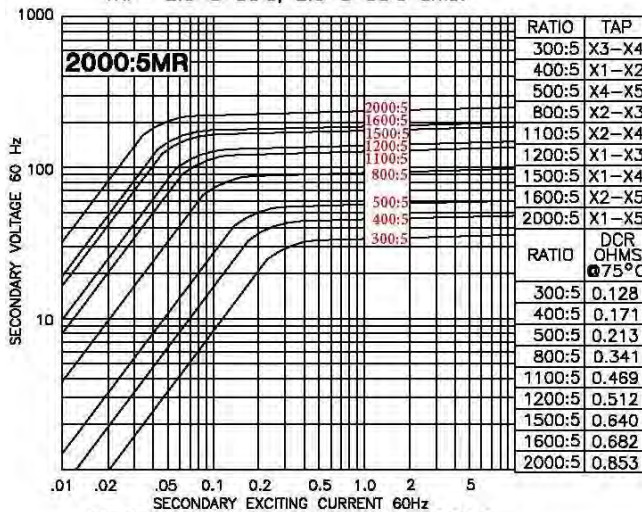
Model 142-601MR - rating C50

TRF= 2.0 @ 30°C, 2.0 @ 55°C amb.



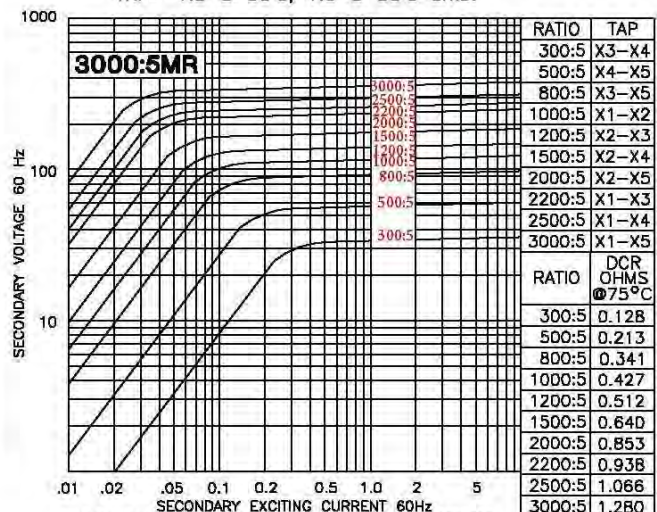
Model 142-122MR - rating C100

TRF= 1.5 @ 30°C, 1.0 @ 55°C amb.



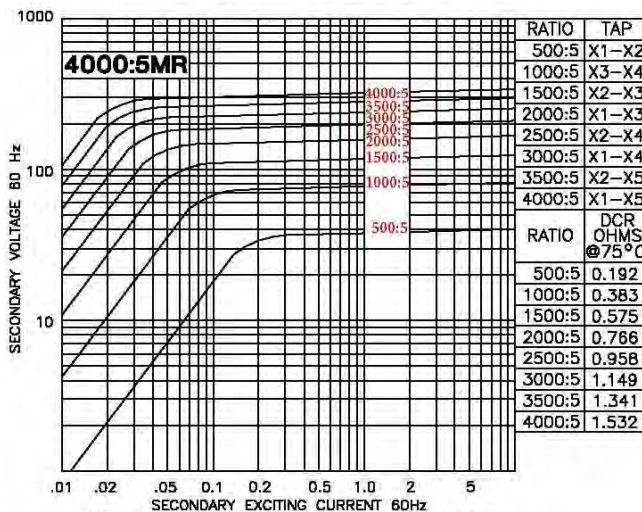
Model 142-202MR - rating C200

TRF= 2.0 @ 30°C, 1.5 @ 55°C amb.



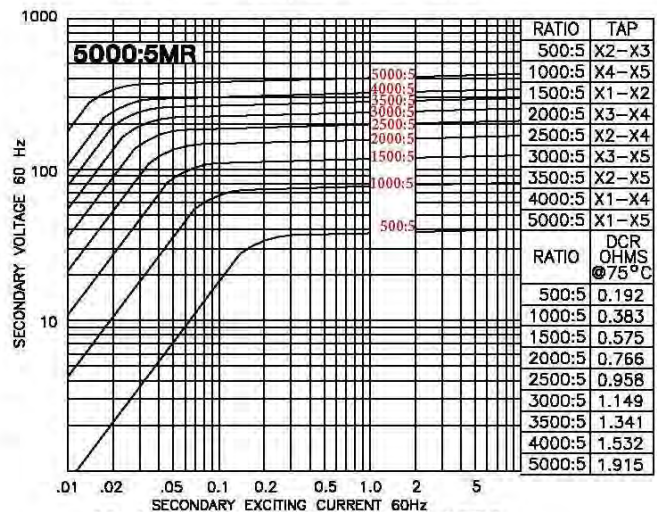
Model 142-302MR - rating C200

TRF= 1.0 @ 30°C, 0.8 @ 55°C amb.



Model 142-402MR - rating C200

TRF= 1.0 @ 30°C, 0.8 @ 55°C amb.



Model 142-502MR - rating C200

TRF= 1.0 @ 30°C, 0.8 @ 55°C amb.