



**Current Transformer
Technologies LTD**



Current Transformer



APPLICATION:

Relaying and metering.

FREQUENCY:

50-400 Hz.

INSULATION LEVEL:

600 Volts. 10 kV BIL. full wave

WINDOW DIAMETER:

7.31"

APPROXIMATE WEIGHT:

60 lbs.

CONNECTIONS:

- Terminals are brass screws No. 10-32 UNF with one flat washer and a split lock washer
- Mounting kit # 143-KIT (optional)

Model	143MR
Window Size	7.31
Width	11.10
Height	11.47
Depth	6.00

MODEL 143MR

Window Diameter 7.31"

Approximate weight: 60 lbs.

Model 143MR

rev 08282025

CERTIFICATIONS:



E228202

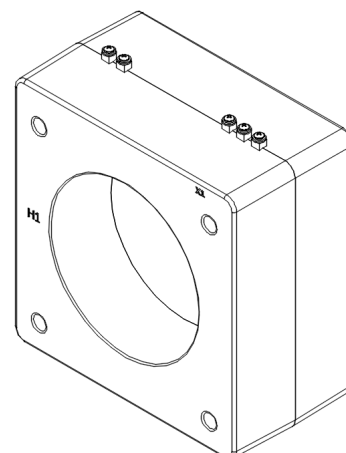
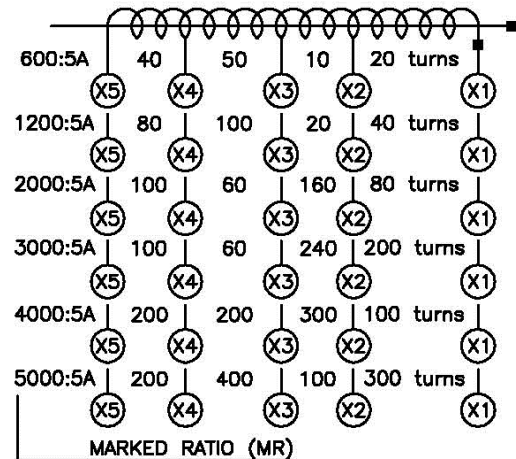
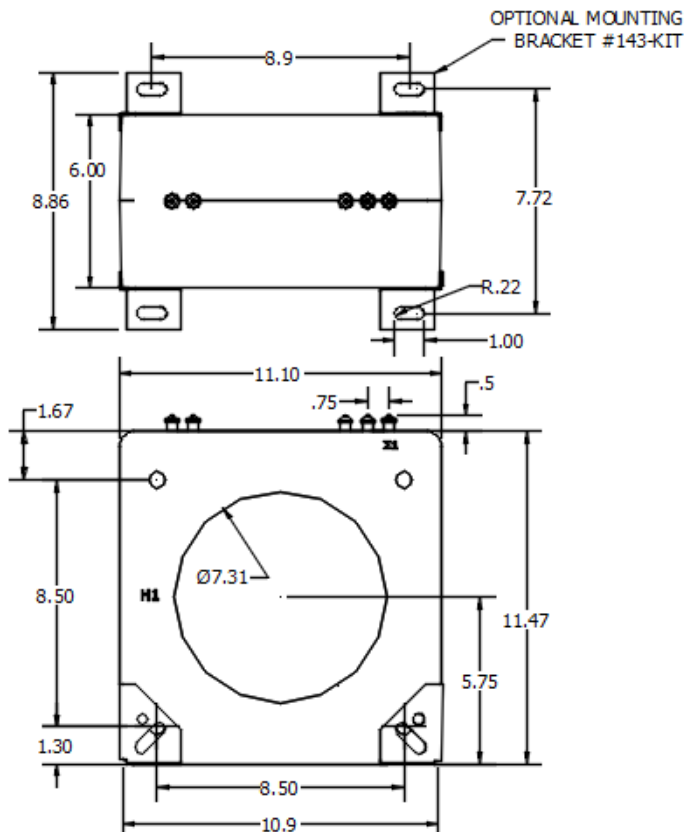


223647



ISO 9001

QUALITY
MANAGEMENT



Products are manufactured in a plant whose quality management system has been certified to be in compliance with ISO 9001:2015 by NQA



Current Transformer
Technologies LTD

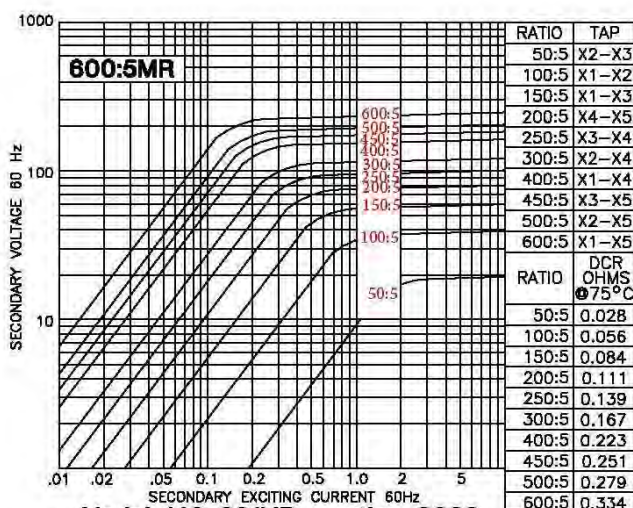


Current Transformer

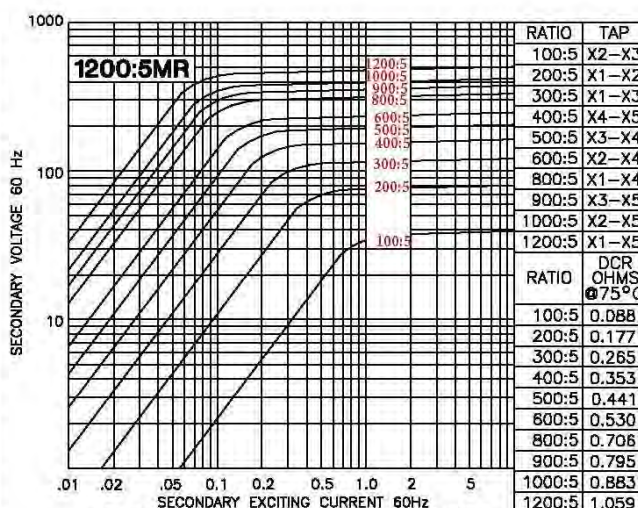
Model 143MR

rev 08282025

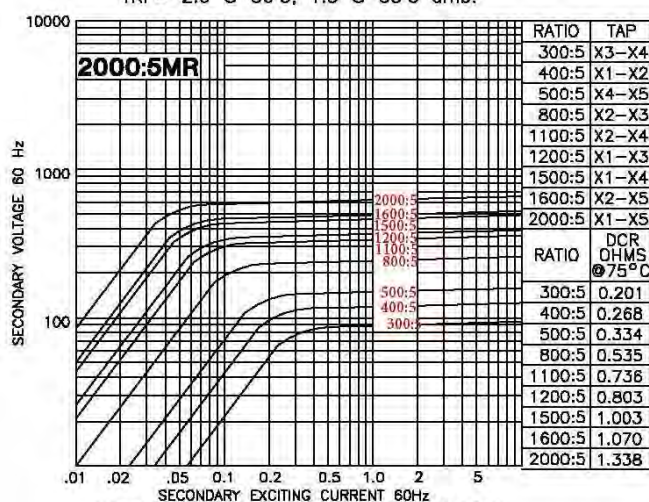
EXCITATION CURVE



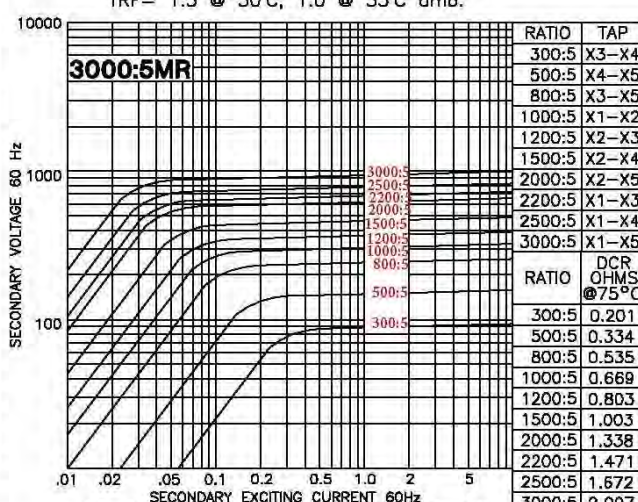
Model 143-601MR - rating C200
TRF= 2.0 @ 30°C, 1.5 @ 55°C amb.



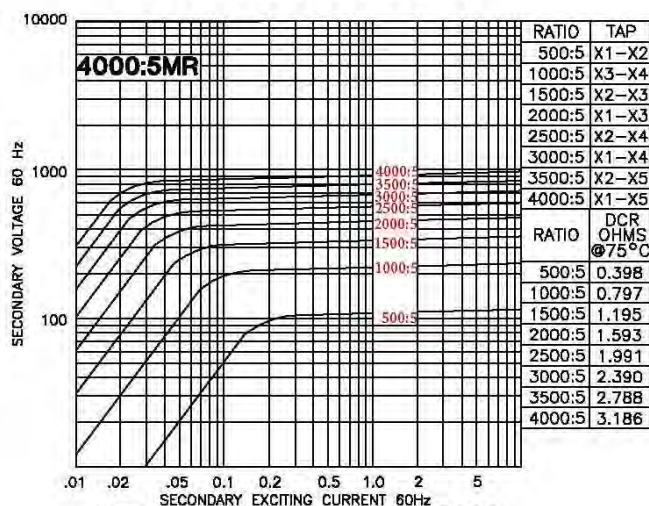
Model 143-122MR - rating C400
TRF= 1.5 @ 30°C, 1.0 @ 55°C amb.



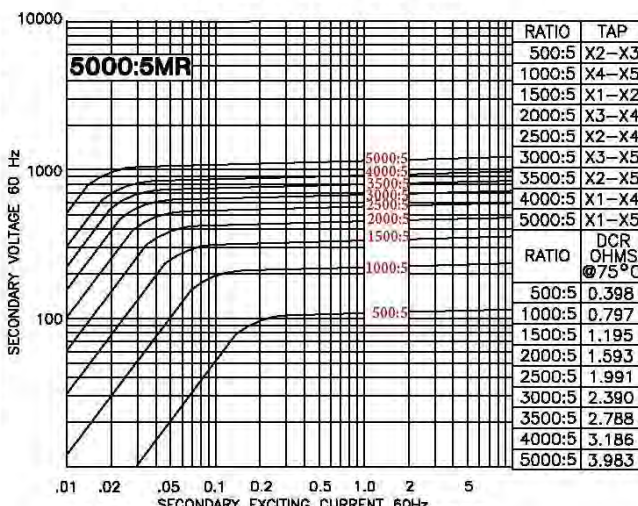
Model 143-202MR - rating C400
TRF= 1.33 @ 30°C, 1.0 @ 55°C amb.



Model 143-302MR - rating C800
TRF= 1.0 @ 30°C, 0.8 @ 55°C amb.



Model 143-402MR - rating C800
TRF= 1.0 @ 30°C, 0.6 @ 55°C amb.



Model 143-502MR - rating C800
TRF= 1.0 @ 30°C, 0.6 @ 55°C amb.