



**Current Transformer  
Technologies LTD**



## Current Transformer



**Model 145 MR**

rev 08262025

### CERTIFICATIONS:



E228202



223647



ISO 9001

QUALITY  
MANAGEMENT

#### APPLICATION:

Relaying and metering

#### FREQUENCY:

50-400 Hz.

#### INSULATION LEVEL:

600 Volts. 10 kV BIL. full wave

#### WINDOW DIAMETER:

6.00"

#### APPROXIMATE WEIGHT:

83 lbs.

#### CONNECTIONS:

- Terminals are brass screws No. 10-32 UNF with one flat washer and a split lock washer
- Mounting Kit # 145-KIT (optional)

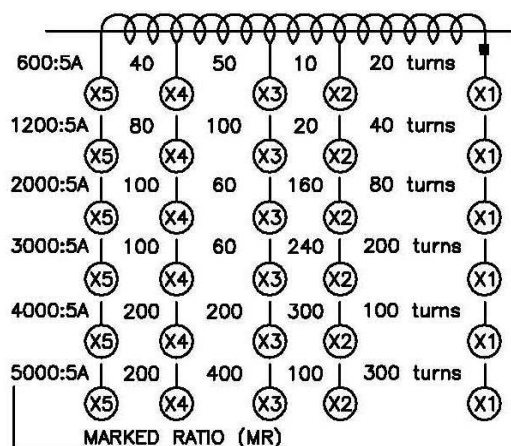
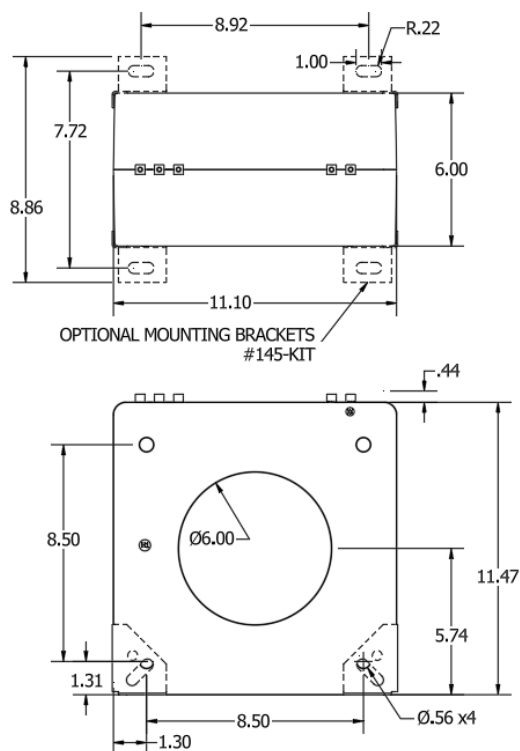
Model	145MR
Window Size	6.00
Width	11.10
Height	11.47
Depth	6.00

#### MODEL 145MR

Window Diameter 6.00"

Approximate weight: 83 lbs.

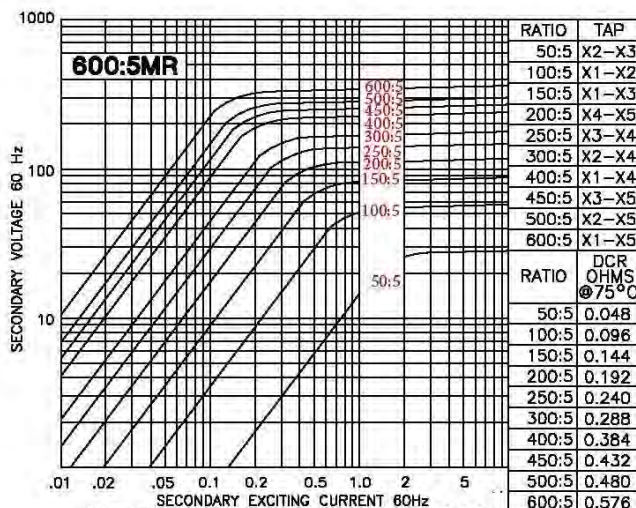
Catalog Number	Relay Class	Continuous Thermal	
		@ 30°C	@ 50°C
145-601MR	C200	2.0	1.5
145-122MR	C400	1.5	1.0
145-202MR	C800	1.33	1.0
145-302MR	C800	1.0	0.8
145-402MR	C800	1.0	0.6
145-502MR	C800	0.8	0.6



Products are manufactured in a plant whose quality management system has been certified to be in compliance with ISO 9001:2015 by NQA

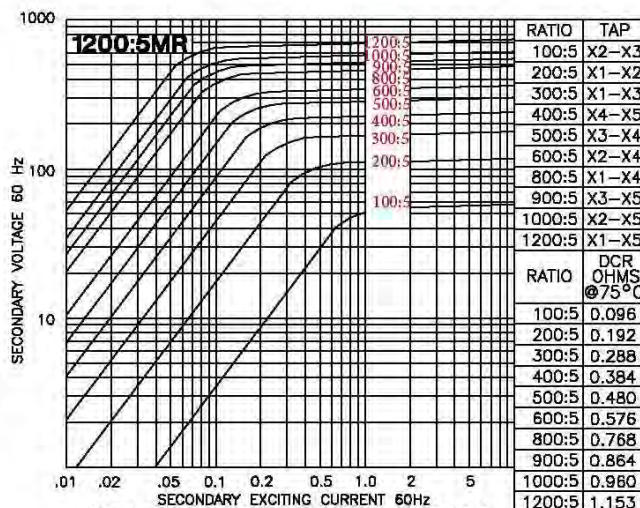


### EXCITATION CURVE



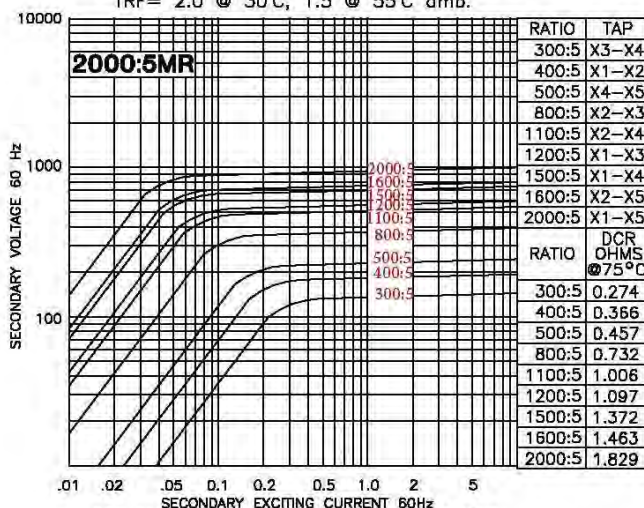
**Model 145-601MR - rating C200**

TRF= 2.0 @ 30°C, 1.5 @ 55°C amb.



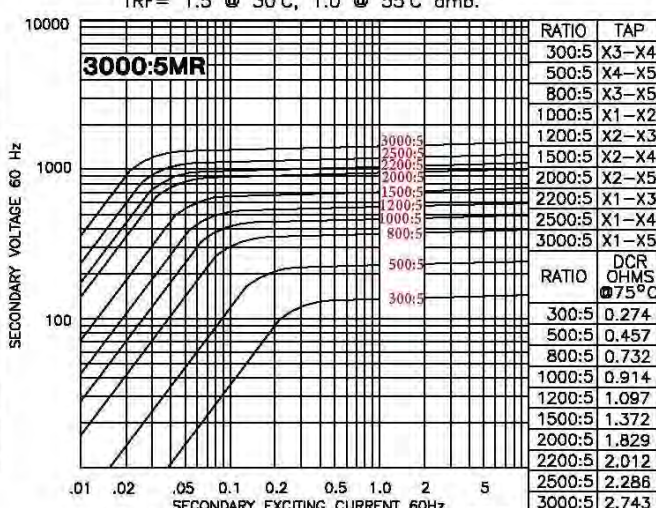
**Model 145-122MR - rating C400**

TRF= 1.5 @ 30°C, 1.0 @ 55°C amb.



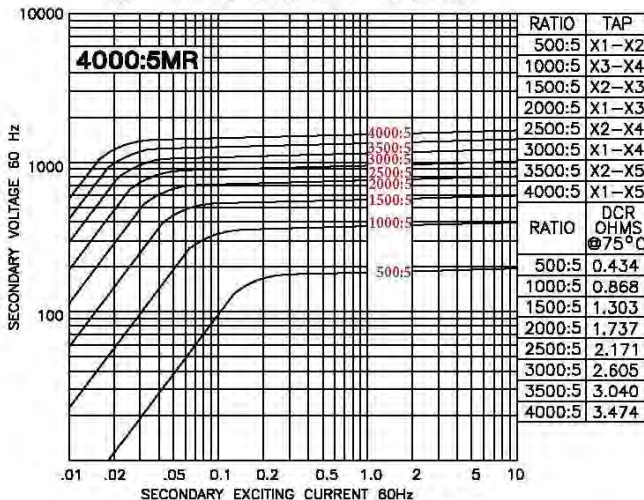
**Model 145-202MR - rating C800**

TRF= 1.33 @ 30°C, 1.0 @ 55°C amb.



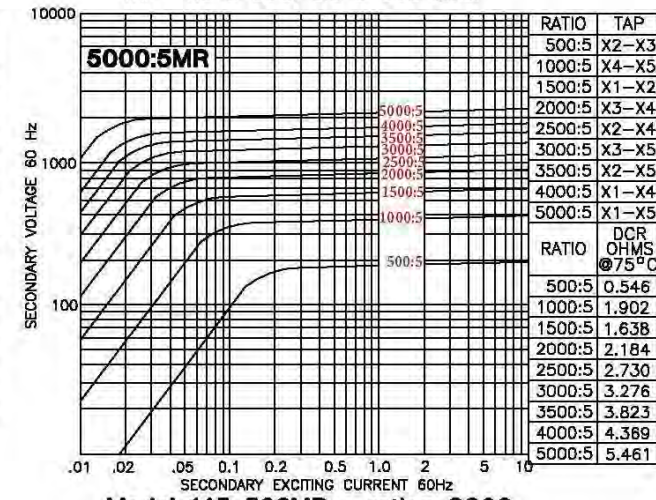
**Model 145-302MR - rating C800**

TRF= 1.0 @ 30°C, 0.8 @ 55°C amb.



**Model 145-402MR - rating C800**

TRF= 1.0 @ 30°C, 0.6 @ 55°C amb.



**Model 145-502MR - rating C800**

TRF= 0.8 @ 30°C, 0.6 @ 55°C amb.