



Current Transformer
Technologies LTD



Current Transformer

Model 56

rev 09172025

CERTIFICATIONS:



E228202



223647



ISO 9001

QUALITY
MANAGEMENT

APPLICATION:

With ammeters, wattmeters and cross
current compensation

FREQUENCY:

50-400 Hz.

INSULATION LEVEL:

600 Volts. 10 kV BIL. full wave

WINDOW DIAMETER:

2.06"

APPROXIMATE WEIGHT:

0.6 lbs.

CONNECTIONS:

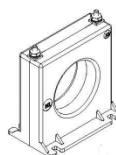
- Flexible Leads are UL 1015 105°C, CSA approved
#16AWG, 24" long
- Non-standard length to be specified
- Terminals are brass studs No. 8-32 UNC
with one flat washer, lock washer, and
regular nut
- RBT and RT case styles also available and
SHT and SFT as SHL and SFL with leads
- Mounting kit # 5SHT-KIT (optional)



56RL



56SHT



56SFT

Model	56SHT	56SFT	56RL
Window Size	2.06	2.06	2.06
Width	3.50	3.50	3.50
Height	3.63	3.63	3.50
Depth	1.10	1.10	1.09

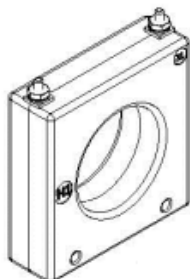
MODEL 56

Window Diameter 2.06"

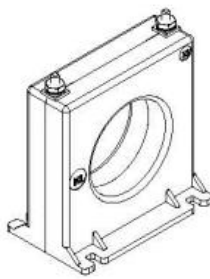
Approximate weight: 0.6 lbs.

CATALOG NUMBER	CURRENT RATIO	ACCURACY AT 60 HZ	BURDEN VA AT 60 HZ
56**-500	50:5	+ 3%	0.5
56**-750	75:5	+ 1%	0.5
56**-101	100:5	+ 1%	1
56**-151	150:5	+ 1%	2.5
56**-201	200:5	+ 1%	4
56**-251	250:5	+ 1%	6
56**-301	300:5	+ 1%	7.5
56**-401	400:5	+ 1%	10
56**-501	500:5	+ 1%	12.5
56**-601	600:5	+ 1%	15
56**-751	750:5	+ 1%	7
56**-801	800:5	+ 1%	8
56**-102	1000:5	+ 1%	10
56**-122	1200:5	+ 1%	12.5

NOTE: WHEN ORDERING, PREFIX CAT NO. WITH MODEL DESIGNATION REQUIRED, I.E. 56SFT-500, 56RL-500, ETC.



56SHT



56SFT



56RL

Products are manufactured in a plant whose quality management system has been certified to be in compliance with ISO 9001:2015 by NQA

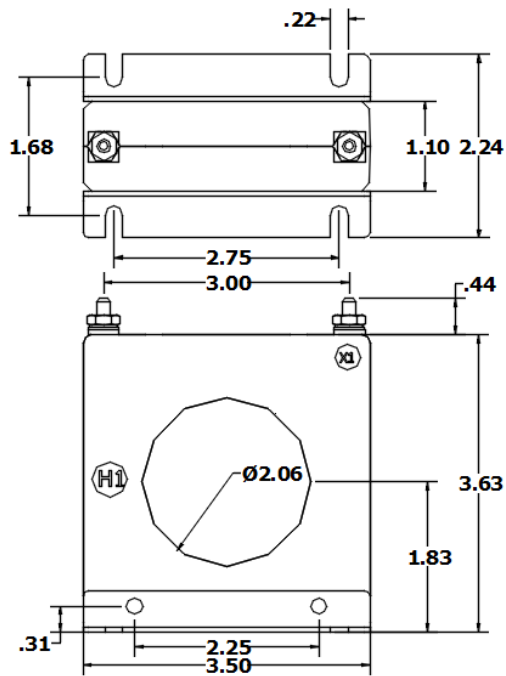


Current Transformer

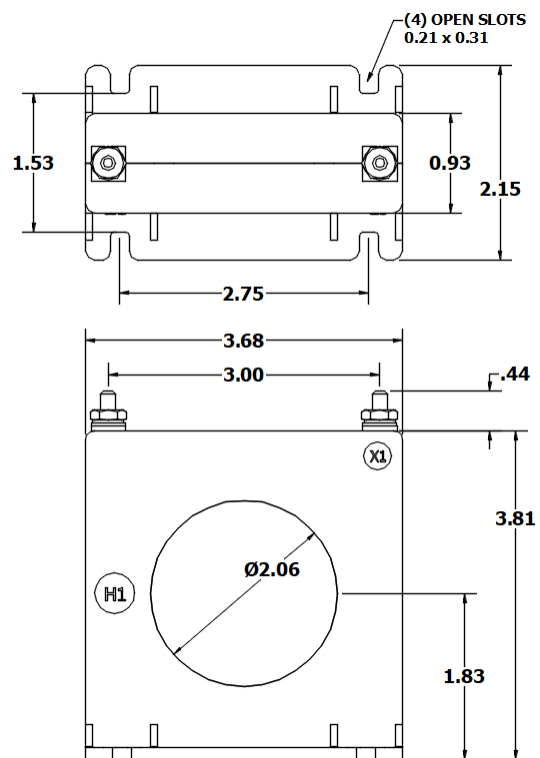
Model 56

rev 08072025

56SHT



56SFT



56RL

