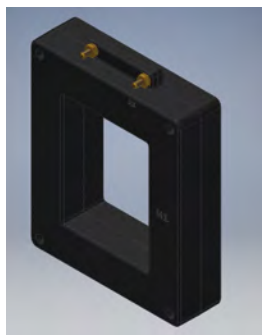




**Current Transformer
Technologies LTD**



Current Transformer



APPLICATION:

Metering

FREQUENCY:

50-400 Hz.

INSULATION LEVEL:

600 Volts, 10 kV BIL, full wave

CONTINUOUS THERMAL RATING FACTOR:

1.33 at 30°C amb., 1.0 at 55°C amb.

INSULATION SYSTEM:

Temperature Class H (180°C.)

WINDOW DIAMETER:

3.25" x 4.25"

APPROXIMATE WEIGHT:

3.5 lbs.

CONNECTIONS:

Secondary terminals are No. 10-32 brass studs with one flat

Model 560

rev 09192025

CERTIFICATIONS:



E228202



223647



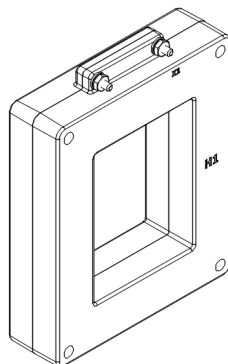
Model	560
Window Size	3.25 x 4.25
Width	5.75
Height	6.88
Depth	1.63

MODEL 560

Window Diameter 3.25" x 4.25"

Approximate weight: 6 lbs.

CATALOG NUMBER	CURRENT RATIO	ANSI METERING CLASS AT 60 HZ					SECONDARY WINDING RESISTANCE (OHMS @ 75°C)
		B0.1	B0.2	B0.5	B0.9	B1.8	
560-101	100:5	2.4	-	-	-	-	0.012
560-151	150:5	1.2	2.4	-	-	-	0.017
560-201	200:5	1.2	1.2	-	-	-	0.023
560-251	250:5	0.6	1.2	2.4	-	-	0.038
560-301	300:5	0.6	0.6	1.2	-	-	0.045
560-401	400:5	0.6	0.6	1.2	2.4	-	0.095
560-501	500:5	0.3	0.3	0.6	1.2	2.4	0.118
560-601	600:5	0.3	0.3	0.6	1.2	1.2	0.142
560-751	750:5	0.3	0.3	0.3	0.6	1.2	0.178
560-801	800:5	0.3	0.3	0.3	0.6	0.6	0.190
560-102	1000:5	0.3	0.3	0.3	0.6	0.6	0.211
560-122	1200:5	0.3	0.3	0.3	0.3	0.6	0.253
560-152	1500:5	0.3	0.3	0.3	0.3	0.6	0.368
560-162	1600:5	0.3	0.3	0.3	0.3	0.6	0.262
560-202	2000:5	0.3	0.3	0.3	0.3	0.6	0.328
560-252	2500:5	0.3	0.3	0.3	0.3	0.3	0.410
560-302	3000:5	0.3	0.3	0.3	0.3	0.3	0.347
560-322	3200:5	0.3	0.3	0.3	0.3	0.3	0.370
560-402	4000:5	0.3	0.3	0.3	0.3	0.3	0.462



Products are manufactured in a plant whose quality management system has been certified to be in compliance with ISO 9001:2015 by NQA

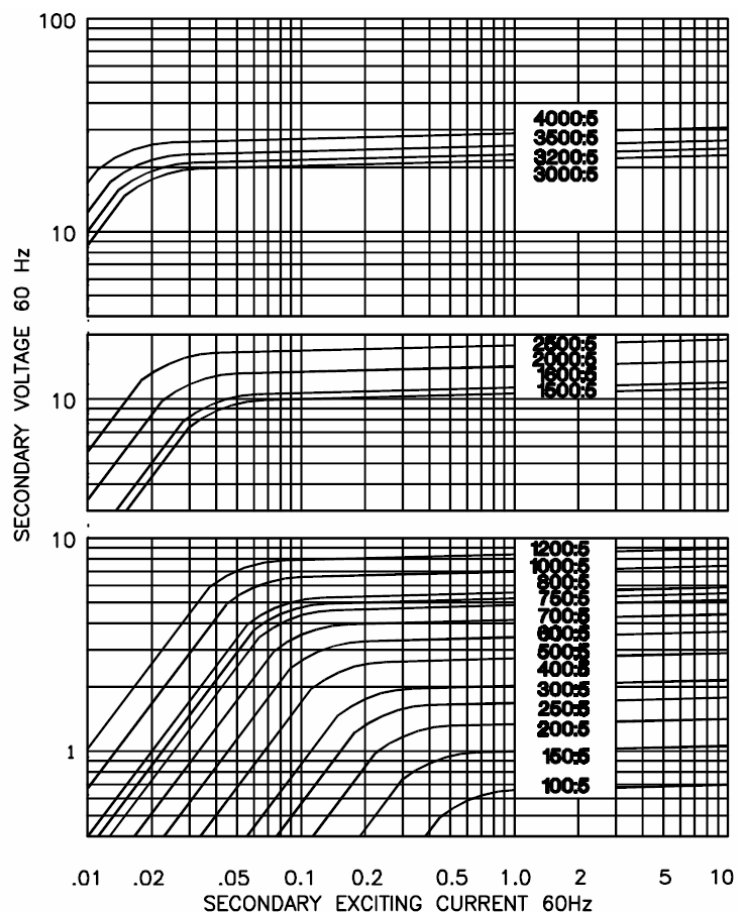


Current Transformer

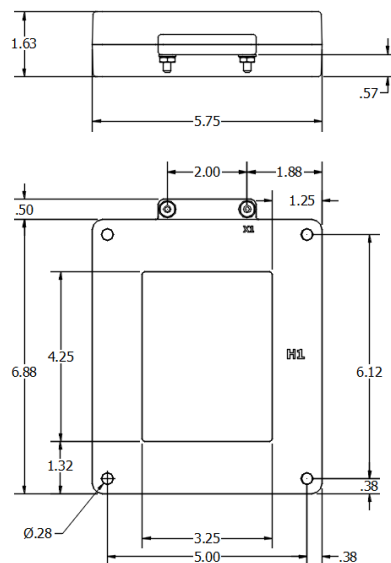
Model 560

rev 09192025

EXCITATION CURVE



DIMENSIONS



Products are manufactured in a plant whose quality management system has been certified to be in compliance with ISO 9001:2015 by NQA