



Current Transformer  
Technologies LTD



## Current Transformer

Model 6

rev 08072025

### CERTIFICATIONS:



E228202



223647



ISO 9001

QUALITY  
MANAGEMENT

#### APPLICATION:

With ammeters, wattmeters and cross current compensation

#### FREQUENCY:

50-400 Hz.

#### INSULATION LEVEL:

600 Volts. 10 kV BIL. full wave

#### WINDOW DIAMETER:

2.06"

#### APPROXIMATE WEIGHT:

1.2 lbs.

#### CONNECTIONS:

-Flexible leads are UL 1015 105 C, CSA approved

#16 AWG 24" long

-Non-standard length to be specified.

-Terminals are brass studs No. 8-32 UNC with one flat washer, lockwasher, and regular nut

-Mounting bracket 59-0223

-SFT and SHT case styles also available as SFL and SHL with leads

-Mounting kit - Part # 6SHT-KIT



6RL



6SHT



6SFT

Model	6SHT	6SFT	6RL
Window Size	2.06	2.06	2.06
Width	4.08	4.12	4.08
Height	4.22	4.22	4.08
Depth	1.10	1.10	1.10

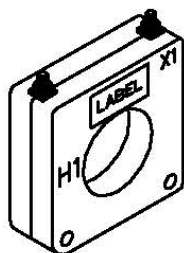
#### MODEL 6

Window Diameter 2.06"

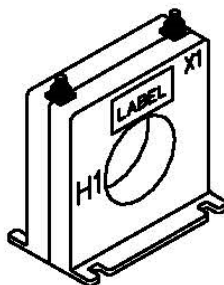
Approximate weight: 1.2 lbs.

CATALOG NUMBER	CURRENT RATIO	ACCURACY AT 60 HZ	BURDEN VA AT 60 HZ
6**-101	100:5	+ 2%	2
6**-151	150:5	+ 1%	5
6**-201	200:5	+ 1%	5
6**-251	250:5	+ 1%	7.5
6**-301	300:5	+ 1%	12.5
6**-401	400:5	+ 1%	15
6**-501	500:5	+ 1%	25
6**-601	600:5	+ 1%	30
6**-751	750:5	+ 1%	25
6**-801	800:5	+ 1%	25
6**-102	1000:5	+ 1%	35
6**-122	1200:5	+ 1%	40
6**-152	1500:5	+ 1%	50

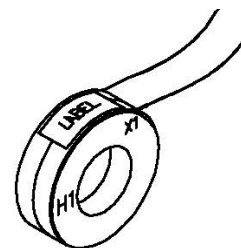
Note: When ordering, prefix Cat No. with model designation, i.e. 6SHT-201, 6RL-301 etc.



6SHT



6SFT



6RL

Products are manufactured in a plant whose quality management system has been certified to be in compliance with ISO 9001:2015 by NQA



Current Transformer  
Technologies LTD

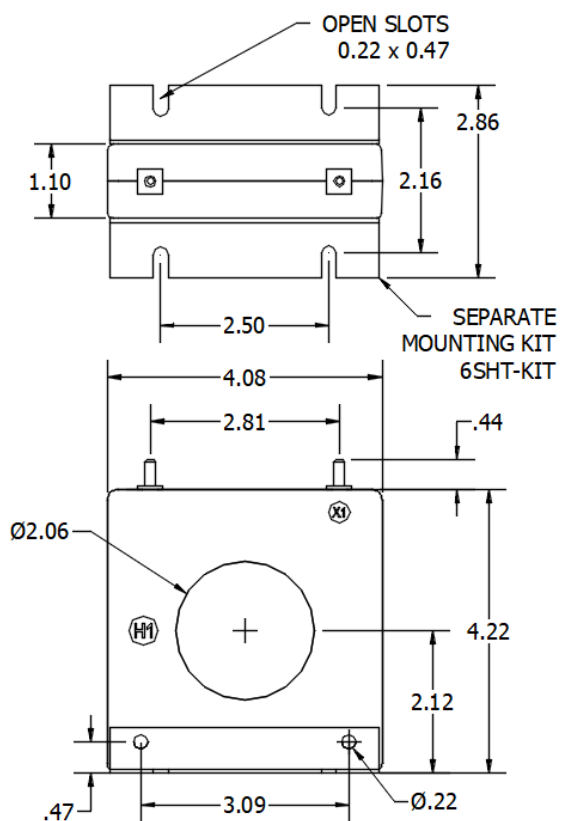


## Current Transformer

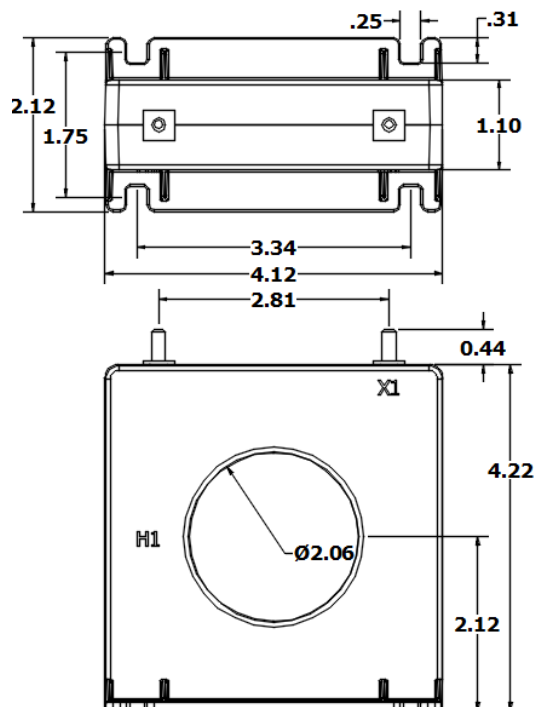
Model 6

rev 08072025

6SHT



6SFT



6RL

