



**Current Transformer  
Technologies LTD**



## Current Transformer

**Model 8**

rev 08142025

### CERTIFICATIONS:



E228202



223647



#### APPLICATION:

Metering

#### FREQUENCY:

50-400 Hz.

#### INSULATION LEVEL:

600 Volts. 10 kV BIL. full wave

#### WINDOW DIAMETER:

3.25"

#### APPROXIMATE WEIGHT:

2.5 lbs.

#### CONNECTIONS:

-Flexible Leads are UL 1015 105°C, CSA

approved #16 AWG, 24" long

-Non-standard length to be specified

-Terminals are brass studs No. 8-32 UNC

with one flat washer, lockwasher, and regular nut

-SHT case styles also available with Leads

-Order Mounting Bracket Kit separately when required for Model 8SHT

-Mounting Kit # 8SHT-KIT



8SHT



8RL

Model	8SHT	8RL
Window Size	3.25	3.25
Width	5.73	5.73
Height	5.73	5.73
Depth	1.15	1.15

#### MODEL 8SHT and 8RL

Window Diameter 3.25"

Approximate weight: 2.5 lbs.

CATALOG NUMBER	CURRENT RATIO	VA FOR +1% CLASS	ANSI METERING CLASS AT 60HZ					SECONDARY WINDING RESISTANCE (OHMS @ 75°C)	CONTINUOUS THERMAL RATING FACTOR	
			BO.1	BO.2	BO.5	BO.9	B1.8		@ 30° C	@ 55° C
8**-151	150:5	1	1.2	2.4				0.09	2	2
8**-201	200:5	5	1.2	1.2	2.4	4.8	4.8	0.03	2	2
8**-251	250:5	7.5	0.6	0.6	1.2	2.4	4.8	0.044	2	2
8**-301	300:5	15	0.6	0.6	1.2	2.4	2.4	0.049	2	2
8**-401	400:5	25	0.3	0.3	0.6	1.2	2.4	0.079	2	1.5
8**-501	500:5	35	0.3	0.3	0.6	0.6	1.2	0.102	2	1.5
8**-601	600:5	50	0.3	0.3	0.6	0.6	1.2	0.147	1.5	1.33
8**-751	750:5	50	0.3	0.3	0.6	0.6	1.2	0.184	1.5	1
8**-801	800:5	60	0.3	0.3	0.3	0.6	0.6	0.197	1.5	1
8**-102	1000:5	75	0.3	0.3	0.3	0.6	0.6	0.246	1.33	1
8**-122	1200:5	75	0.3	0.3	0.3	0.3	0.6	0.169	1.5	1
8**-152	1500:5	90	0.3	0.3	0.3	0.3	0.6	0.316	1.33	1
8**-162	1600:5	100	0.3	0.3	0.3	0.3	0.6	0.337	1.33	0.8
8**-202	2000:5	120	0.3	0.3	0.3	0.3	-	0.422	1	0.8
8**-252	2500:5	50	0.3	0.3	0.3	0.3	-	0.438	1	0.8
8**-302	3000:5	60	0.3	0.3	0.3	0.3	-	0.526	1	0.8
8**-322	3200:5	70	0.3	0.3	0.3	0.3	-	0.561	1	0.8

Note: When ordering, Prefix Cat. No. with model designation required, i.e. 8RL-301 or 8SHT-301



8SHT



8RL

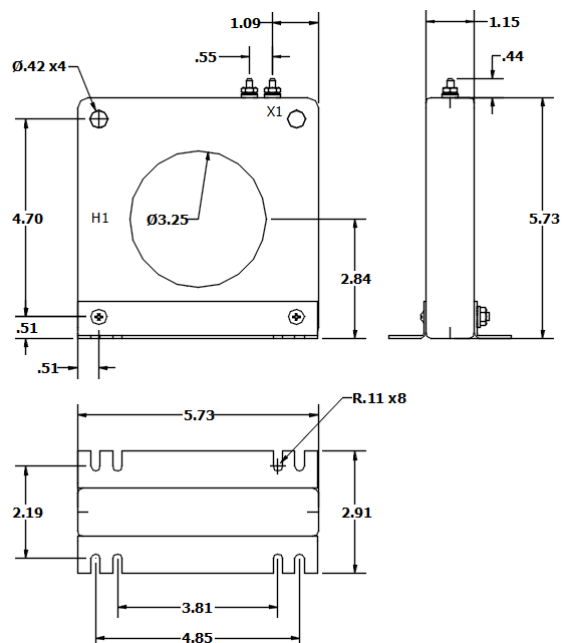
Products are manufactured in a plant whose quality management system has been certified to be in compliance with ISO 9001:2015 by NQA



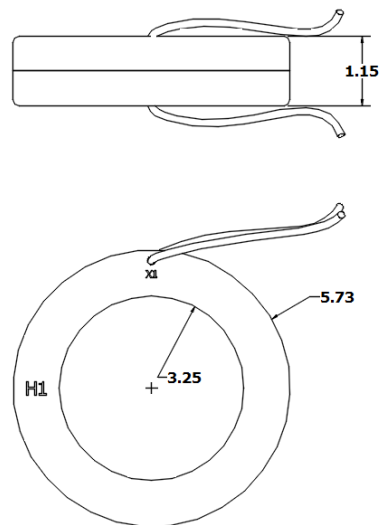
## Model 8

rev 08142025

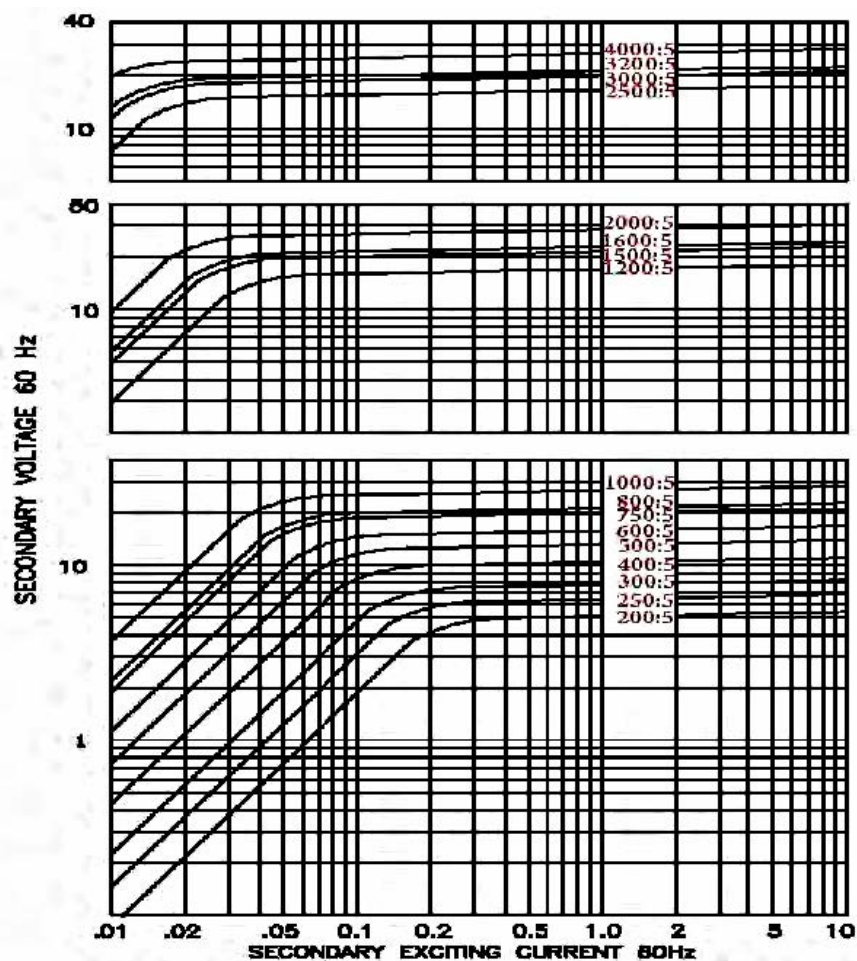
**8SHT**



**8RL**



### EXCITATION CURVE



### Model 8

Products are manufactured in a plant whose quality management system has been certified to be in compliance with ISO 9001:2015 by NQA